

SANS SOUCI

Consciously Captivating Designs

Our Project Selection

This book is dedicated to some of our favourite Sans Souci projects realised around the globe. Explore hotels, restaurants, residences and public spaces designed by the leading interior design studios and elevated by our consciously captivating lighting installations.



**The meaning of our name
“Sans Souci” – carefree – is central
to our ethos. We use captivating
design to create spaces of beauty
and tranquillity that capture your
imagination and free your mind from
worry.**



Fully Bespoke

Work with our team to develop one-of-a-kind installations to crown your dream interior. Our design and production teams collaborate with you to select the best style, materials and finishes for your project.

Design

Design is at the heart of every piece Sans Souci creates. Our in-house team of designers, together with esteemed external partners, create unique pieces to elevate your interior. We combine the very best in design, craft, and technology to create the finest pieces, harnessing cutting-edge technologies to create an aesthetic that you won't find anywhere else.



Technology



Experts in using nanocoating technology, we use an innovative and eco-friendly processes to ensure an exquisite finish.



Content

Hospitality

Burj Al Arab	14
Claridge's Hotel	20
The Connaught Patisserie	28
JW Marriott Hotel Kolkata	35
Sablier Restaurant & Bar	42
Mandarin Oriental Palace	48
Grand Resort Bad Ragaz	54
Le Beaulieu at Sofitel Legend	66
W Dubai - The Palm	74
Southbank Place Spa	82
The Ritz-Carlton Berlin	88
W Suzhou Hotel	94
The Ritz-Carlton Berlin	100
King's Casino	108
Jeju Shinhwa World Marriott	116
Four Seasons Hotel Kuala Lumpur	124
The Address Hotel	128
AlRayyan Hilton Hotel Doha	136
7132 Vals Hotel	144
Widenmoos	150
Hotel de Paris Monte Carlo	158
Columbus Hotel Monte Carlo	162
Maximilian Hotel	166
Banana Island Resort Doha	170
Intourist Hotel	174
Baku Marriott Hotel Boulevard	178
Sheraton Doha Resort	184
Bochka Restaurant	188
Pavilion Prud Patriki Restaurant	192

Residences

Four Seasons Private Residences	198
The Palm Jumeirah Residence	206
The Palm Jumeriah Villa	212
BVLGARI Residences	216
Regent's Crescent Apartment	222
Private Residence London	226
Abu Dhabi Villa	232
Dubai Hills Estate Villa	238
Sharjah Villa	246
Villa Richter	254
Jumeirah Islands Villa	260
XXII Carat	268
Dubai Hills Villa	274
Ham Villa	280
Hollywood Hills Residence	286
ABN Residence	290
Rajapushpa Villa	296

Public spaces

One Manhattan Square	304
Sheremetyevo International Airport	310
Waterfront Market	314
Central Park Towers	318
Jetex FBO VIP Terminal	324
KPM Healthcare Centre	330
Al Rufaa Celebration Hall Complex	336
Oval Building	344
Gate Mall	348
Office Building	356

Yachts

Diamonds Are Forever	362
Lady Linda	366
Fruitful Voyage	372

BESPOKE

HOSPITALITY

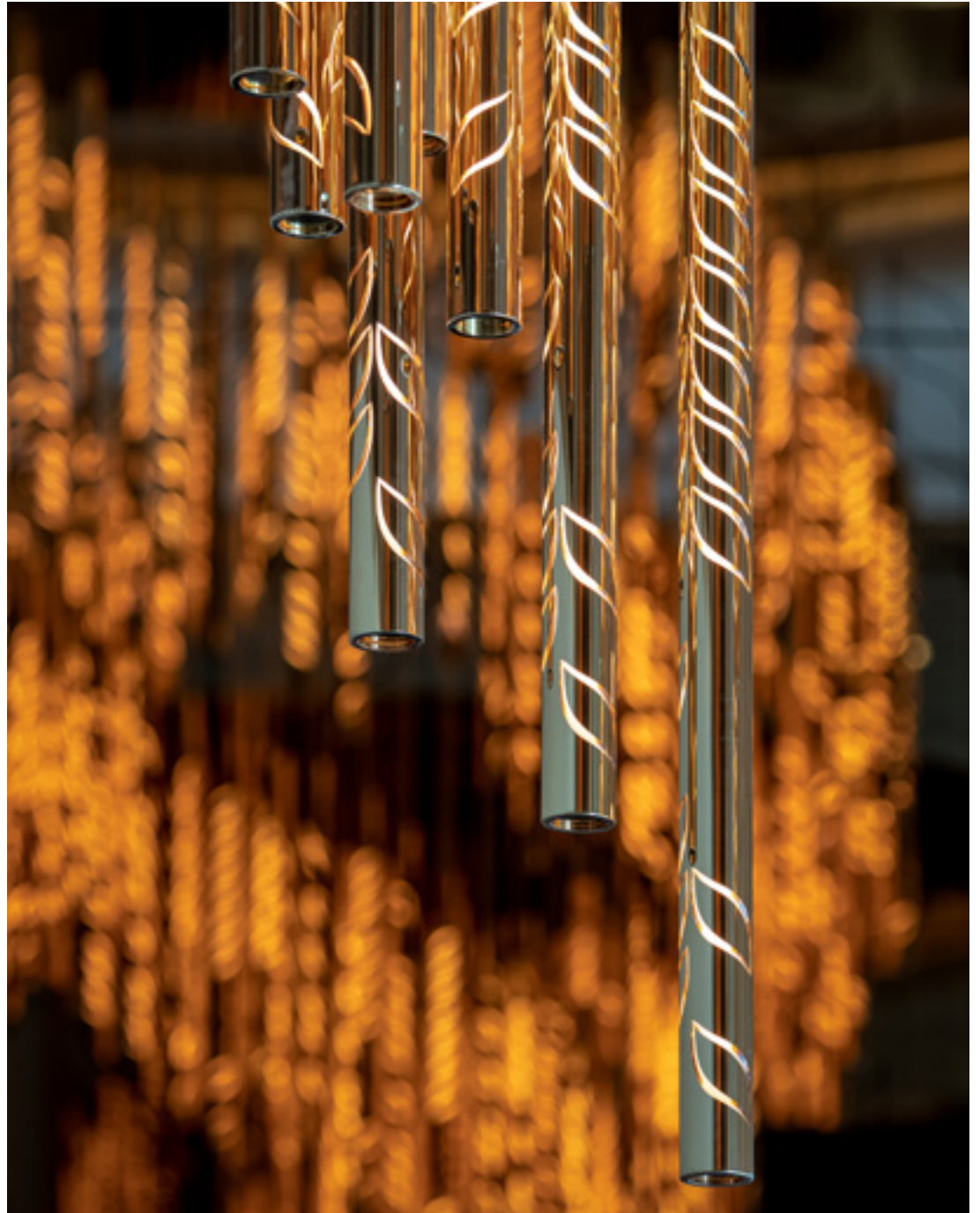
Spaces created for travellers and friends, for special occasions as well as relaxing days. These interiors are created to catch your attention, recharge your energy and create cherished memories. Sans Souci has been involved in projects from hotel lobbies to famous restaurants and spas. On the next pages you can find the most iconic names such as Dubai's Burj Al Arab and London's Claridge's.

Burj Al Arab

Lighting installation in the centre of Burj Al Arab's lobby in Dubai. The stunning chandelier was adapted from our signature Symphony collection and is comprised of 210 crystal tubes, weighing around 450 kilograms.

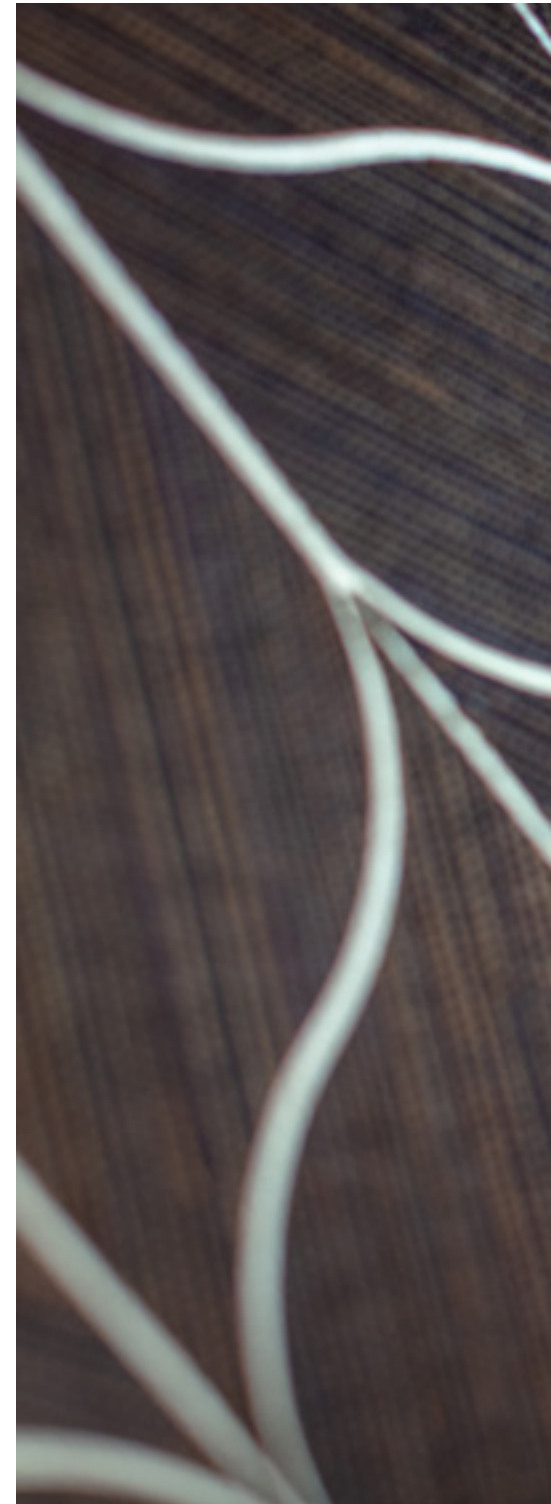






Lobby
Burj Al Arab, Dubai

Designed by KCA International for Jumeirah Group, the renovated exit lobby in Burj Al Arab features the magnificent spiral chandelier as the bespoke centrepiece for the interior. The installation's design plays with light to create a glowing piece of art in the heart of the space. The installation seamlessly integrates heritage craftsmanship with the latest nanocoating technologies.



Lobby
Burj Al Arab, Dubai

Using cutting-edge techniques, each glass tube was coated in gold and engraved with a unique leaf motif taken from the luxury hotel's wallpaper.



Claridge's London

**Bespoke lighting
installations fitted
throughout London's
iconic Art Deco hotel.
A total of 264 pendants
and 198 maid lights
were made to illuminate
Claridge's interiors.**

London, UK






Claridge's London
London, UK

The contemporary lighting refit was the vision of leading lighting designers L'Observatoire International with each installation designed by French architect Sylvain Dubuisson, well known for mixing classical style with cutting-edge lighting technologies. Each piece is made from opaque, sandblasted glass crafted into geometric patterns, which ensures unique light dispersion. This is further enhanced by fitting two-tone LED strips and one main light source to create a very special and sophisticated ambience.







“When I designed these pieces for Claridge’s, I wanted them to be both decorative and intriguing to fit with the elegance of the Art Deco interior design. This was achieved by combining two contrasting patterns - rectangular and circular - similar to Chesterfield’s sofas. The large, complicated designs were then produced in white glass, which embodies simple sophistication. Manufacturing large installations such as these is complicated but I am thrilled with the results, which stay true to my original designs.”

Sylvain Dubuisson, architect and designer





The Connaught Patisserie

The heart of Mayfair is where you can find one of the most sparkling gems in London.

The Connaught hotel's patisserie, home to extraordinary handmade cakes and pastries as well as our bespoke lighting.

London, UK

CROISSANTS

WAGELFISCH

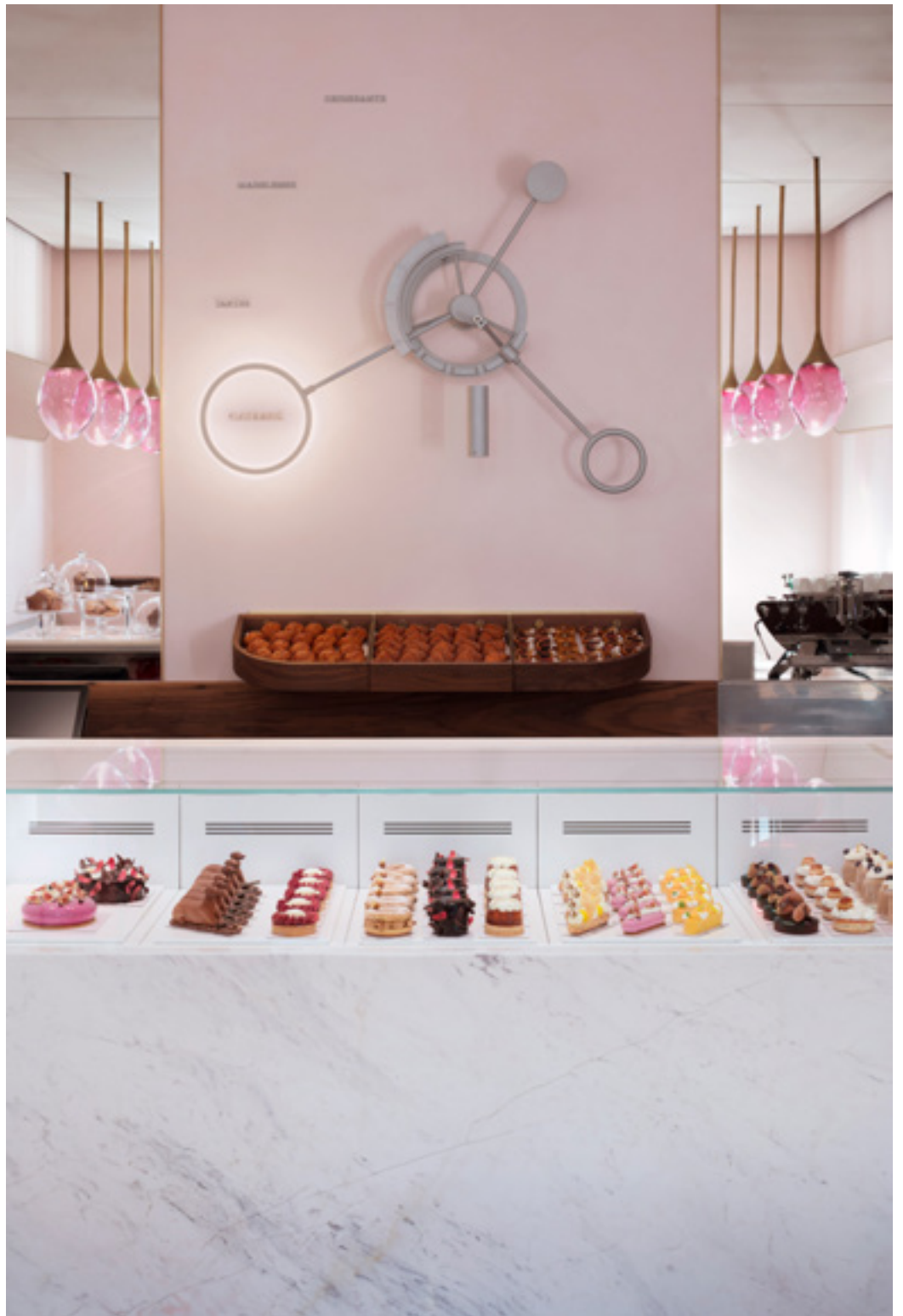
BRATIS

GLAZUR





Patisserie
London, UK







As well as our bespoke lighting installation masterfully expressing a passion for superior design. The playful shades of pink add a delicate touch of sweetness.

AB Rogers Design's clear vision to make The Connaught Patisserie a feast for the senses provided a welcomed challenge for our designer Tomas Sakra. The final result is a stunning display of handblown and hand-shaped pendants that emphasize careful attention to every single detail. Like the exquisite hand-finished pastries, each crystal pendant is a true original, highlighting the endless possibilities of the glass-making artistry.

The Connaught Patisserie
London, UK





JW Marriott Hotel Kolkata

**Sans Souci produced
light installations
for all public spaces
of the hotel. Discover
the modern, pure, and
powerful beauty of
clear crystal glass.**

Kolkata, India







The JW Marriott hotel offers many world-class amenities. Entering the lobby, a crystal braid spanning 21 meters and weighing 650 kilograms will catch your attention. Meeting and office spaces are separated by 5-meter glass screens, decorated by sandblasted floral motifs, and LED illuminated. The pre-function spaces feature various wave installations. Each wave is composed of several hundred leaves. Our lighting installation in the Grand Ballroom consists of 5000 transparent prisms and fills the luxurious interior with graceful elegance.

JW Marriott Hotel Kolkata
Kolkata, India



JW Marriott Hotel Kolkata
Kolkata, India



Sablier Restaurant & Bar

A captivating piece of drama. This exquisite installation combines light, beauty and music to crown the award-winning interior design of the Sablier Restaurant, Zurich.

Zurich, Switzerland











Restaurant & bar
Zurich, Switzerland

The Opera installation runs 12 metres through the bar and restaurant. It is made from Bohemian premium glass components, suspended from the ceiling, in decadent golden hues. Part of our dynamic lighting collection, different components of the installation light up in time in different colours. This bespoke piece brings together beauty, drama and colourful experience.

Mandarin Oriental Palace

Classic design for an iconic Belle Époque landmark in the heart of Switzerland. Two bold bespoke lighting installations based on some of our best-loved collections, Bowls and Frozen, specially made for the newly renovated luxury presidential suite at the Mandarin Oriental Palace, Luzern, located on the shore of the eponymous lake.

Luzern, Switzerland







Presidential suite
Luzern, Switzerland

Working closely with Jestico + Whiles, we created two bespoke lighting installations to elevate the already marvellous interior of the presidential suite, best characterised as contemporary elegance with a touch of Swiss heritage.

The first fixture made of delicate handblown crystal glass petals in crystal opal mist colour constitutes a dominant feature of the entire space, hovering with ease over the uniquely oval-shaped living area. The ethereal design is inspired by our Frozen collection, creating a dramatic yet seemingly fragile formation reminiscent of icy snowflakes falling to the ground.





Dining room
Luzern, Switzerland

The second fixture based on our Bowls collection serves as a centrepiece for the dining room area, forming a wave of light made of sleek handblown crystal glass components, each finished with a rose gold nanocoating that artfully reflects the light and exquisitely matches the dark wood panelling of the room.

Grand Resort Bad Ragaz

**Luxurious interiors and
state-of-the-art technology,
Grand Resort Bad Ragaz
guarantees the best in
hospitality.**







Lobby
Bad Ragaz, Switzerland

Swiss grand resort in Bad Ragaz. More than ten lighting designs in one project. The largest installation is the eighteen-meter-long glass waterfall. This waterfall dynamically lights and intersects the entire area of this beautiful hotel in Switzerland, from the rooftop to the ground floor.



Reception
Bad Ragaz, Switzerland





Restaurant
Bad Ragaz, Switzerland





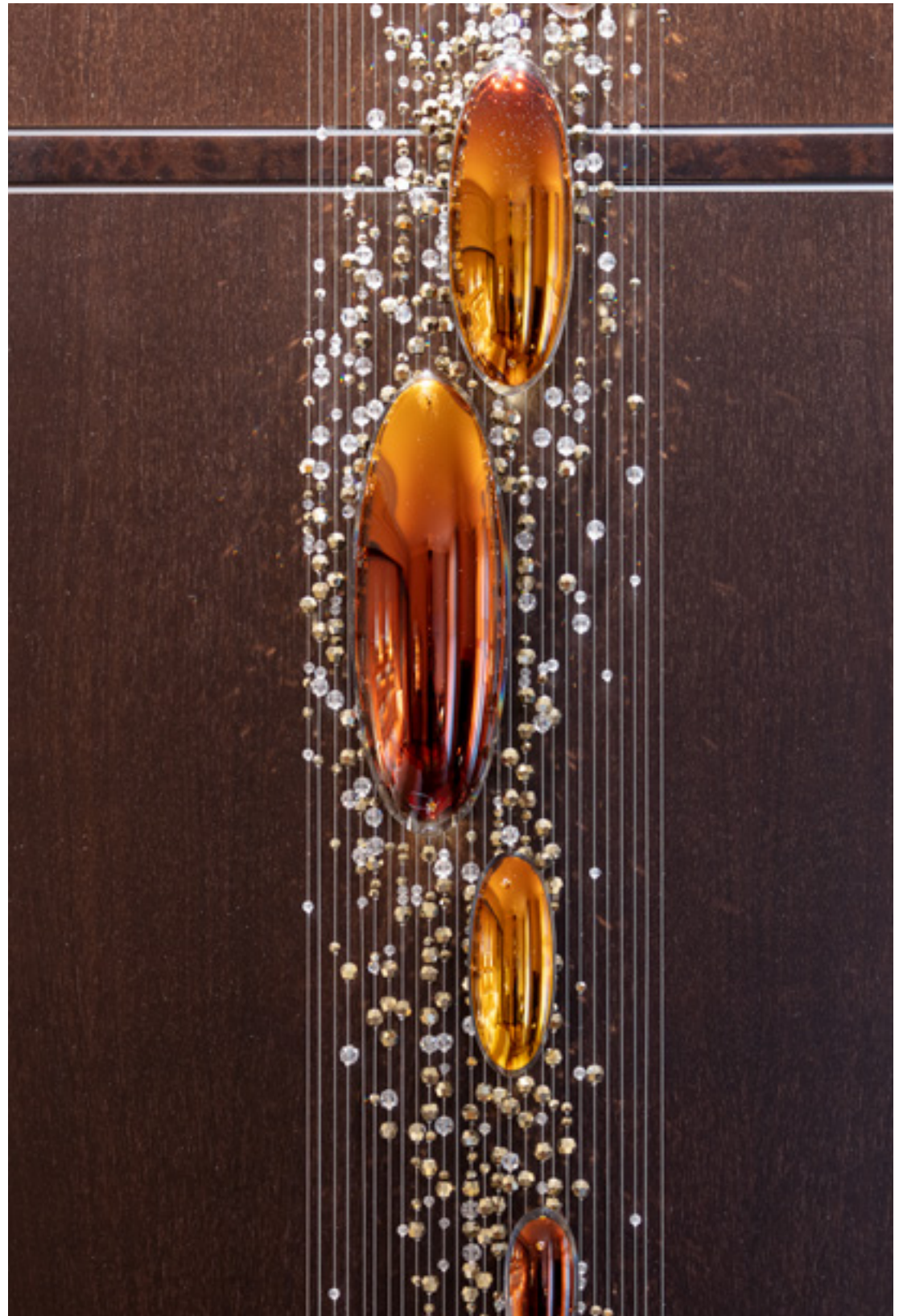




Wine cellar
Bad Ragaz, Switzerland



King suite apartment
Bad Ragaz, Switzerland



Le Beaulieu at Sofitel Legend

A series of bespoke lighting installations crown Le Beaulieu, the award-winning French fine dining restaurant at Sofitel Legend Metropole Hanoi. Inspired by our Vice Versa collection, these fixtures form the ultimate centrepiece for the stunning interior of white, gold and blue hues.

Hanoi, Vietnam











The design of the main piece in the centre of the room is mirrored in the two smaller iterations on either side, ensuring to catch the diners' eye from anywhere in the restaurant. Whether you are there to savour one of the most considerable wine collections in Vietnam or relish the innovative haute cuisine with nods to traditional French flavours, our creations are set to make your experience even more delightful.

As part of Le Beaulieu's extensive refurbishment, Sans Souci created three lighting installations with components made of fused crystal glass in clear colour with aurum nanocoating and a stainless steel finish, accentuating the restaurant's atmosphere of classical opulence.

Restaurant
Hanoi, Vietnam



Restaurant
Hanoi, Vietnam



W Dubai - The Palm

**The newly opened
W Dubai – The Palm hotel
located at Dubai’s
most iconic destination,
The Palm, has become a
new home for a large
range of Sans Souci
lighting installations.**

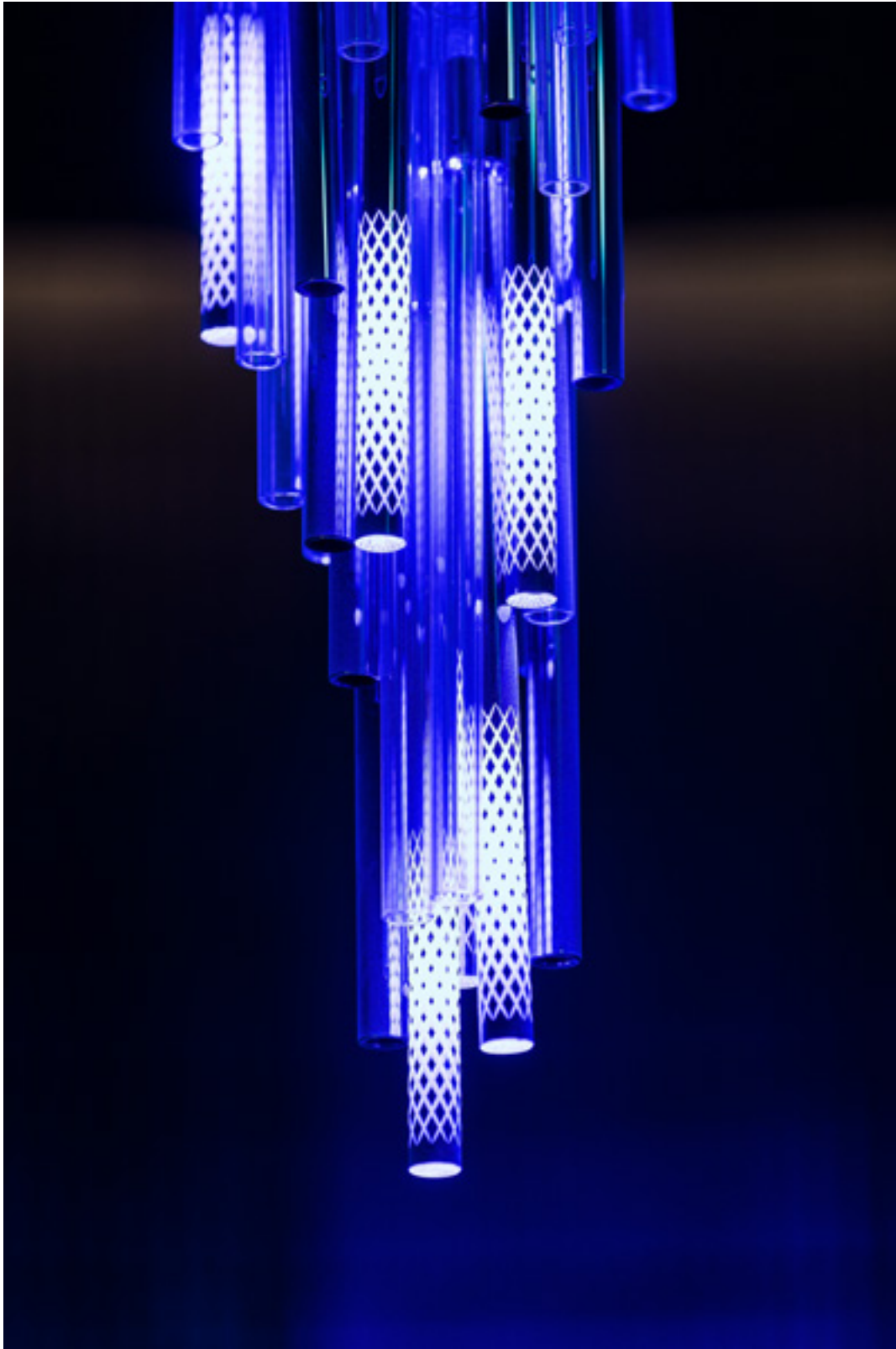




W Hotel - The Palm
Dubai, UAE



In cooperation with DWP, a world-renowned architecture and design company, our designers introduced six various lighting installations in the atrium, W lounge, meeting room, and the breathtaking Away spa. The atrium attracts attention with a large bar composed of many glass pyramids with a metal nanocoating finish. Using various shapes and sizes of the pyramids from the processed glass emphasizes the effectiveness and environmental-friendliness of this unique installation. Located within the W hotel, the Away spa will surprise you. A Big Drop welcomes you into the spa area.



W Hotel - The Palm
Dubai, UAE







Southbank Place Spa

**London's Southbank Place
Spa presents a unique
journey through the
realm of world-class
hospitality and
interior design.**

London, UK







Step inside and allow yourself to be mesmerized by the soothing palette of colours and glowing ambience shaped by Sans Souci's innovative lighting. Enjoy the lush setting designed to ease your mind, body, and soul.

Southbank Place Spa
London, UK





The Ritz- Carlton Berlin

**The Ritz-Carlton Berlin
embodies the beauty
born from the union
of Berlin Golden Age
and Art Deco design.**

Berlin, Germany

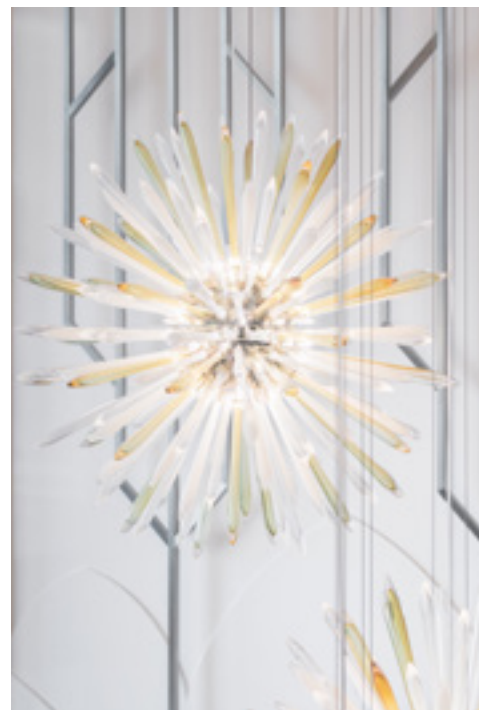






Lobby, The Ritz-Carlton Berlin
Berlin, Germany

Our Starburst components sparkle brilliantly through the lobby of the Berlin hotel, drawing guests' attention. Could you tell a camera of the Golden era of Marlene Dietrich inspired this lighting installation? A modern, vibrant tea lounge was given a brand new dimension by the Space Balls light. The contrasting play of silver and brass nanocoating finish refers subtly to the Golden Age with a modern twist. Bowls, central lighting installation in the Den of Heaven highlights the luxury ambience of this hotel. Cool white combined with warm gold tones shows the luxury approach to decoration.

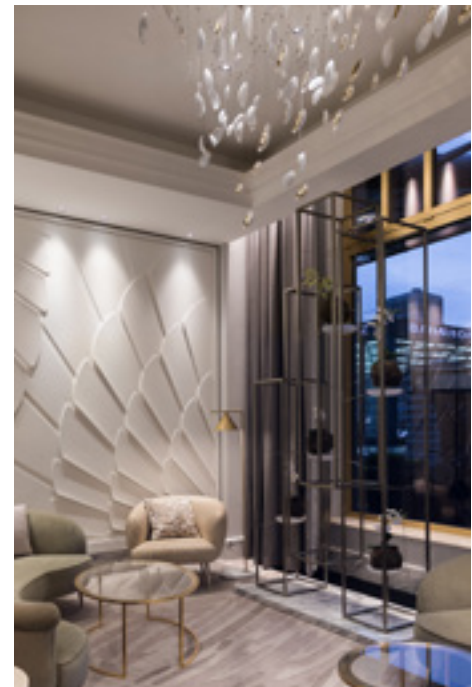




Lobby
Berlin, Germany



Lobby
Berlin, Germany



W Suzhou Hotel

**The W Suzhou Hotel
is the new centre of
urban architecture
and design in the city.
The hotel represents
a modern take on the
local architectonic
heritage inspired by
the region's deep
connection to nature.**

Suzhou, China











W Suzhou Hotel
Shuzou, China

Original futuristic wall decoration “Brooch” was created by combining traditional handblown glass with the technology of state-of-the-art 2D CNC machines. Its pyramids have become a dominating feature and a magnificent representation of all interior artwork. By applying vacuum plating, we produced beautiful metallic shades, combining technological and decorative processes. The translucent plated layers give this lighting installation a different look on or off.

The Ritz- Carlton Pune

**Situated at the heart of
Pune, an architecturally
impressive hotel masters
the art of luxury by
drawing on India's
heritage of elegance.**

Pune, India







The hotel's design reflects a seamless union of classical grandeur and timeless sophistication, offering both traditional and modern perspectives. Small details such as design motifs inspired by Indian silhouettes and classic chandeliers gracefully evoke a sense of the place. A monumental crystal chandelier made from 45 000 pieces sparkles in the lobby. A unique installation can also be found in the ballroom, where each chandelier was handmade with 31 000 crystal drops.

Ballroom
Pune, India



Lobby
Pune, India







Hall
Pune, India



King's Casino

King's Casino luxurious design is influenced by the casino hotels of Las Vegas. Its Fabergé inspired interior was selected as a finalist for the SBID International Design Excellence Awards in 2018.





For Europe's largest poker room in the King's Casino, Sans Souci designed luxurious chandeliers and striking architectural pieces made of glass – impressive columns, captivating mural lighting installations, the unique glass dome, and components decorating the bar and the reception desk. Our designers were inspired by a Fabergé egg's beauty, creating a central theme, which shows up in each design, down to the elaborate details.



King's Casino
Rozvadov, Czech Republic



King's Casino
Rozvadov, Czech Republic





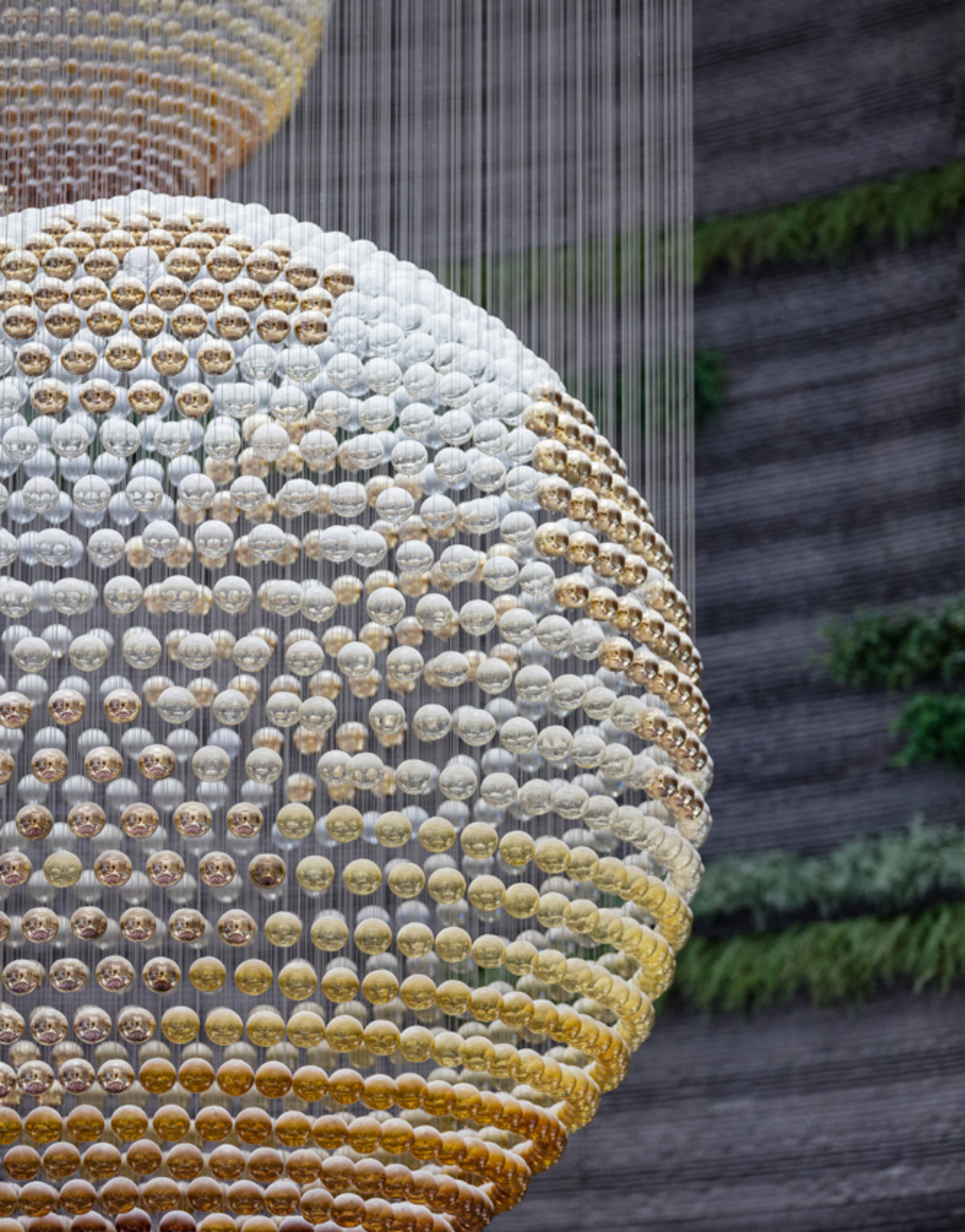




Jeju Shinhwa World Marriott Resort

**One of South Korea's
largest integrated
resorts spanning across
2.5 million square
meters, Jeju Shinhwa
World is another great
cooperation with
Wilson associates.**

Seogwipo-si, South Korea





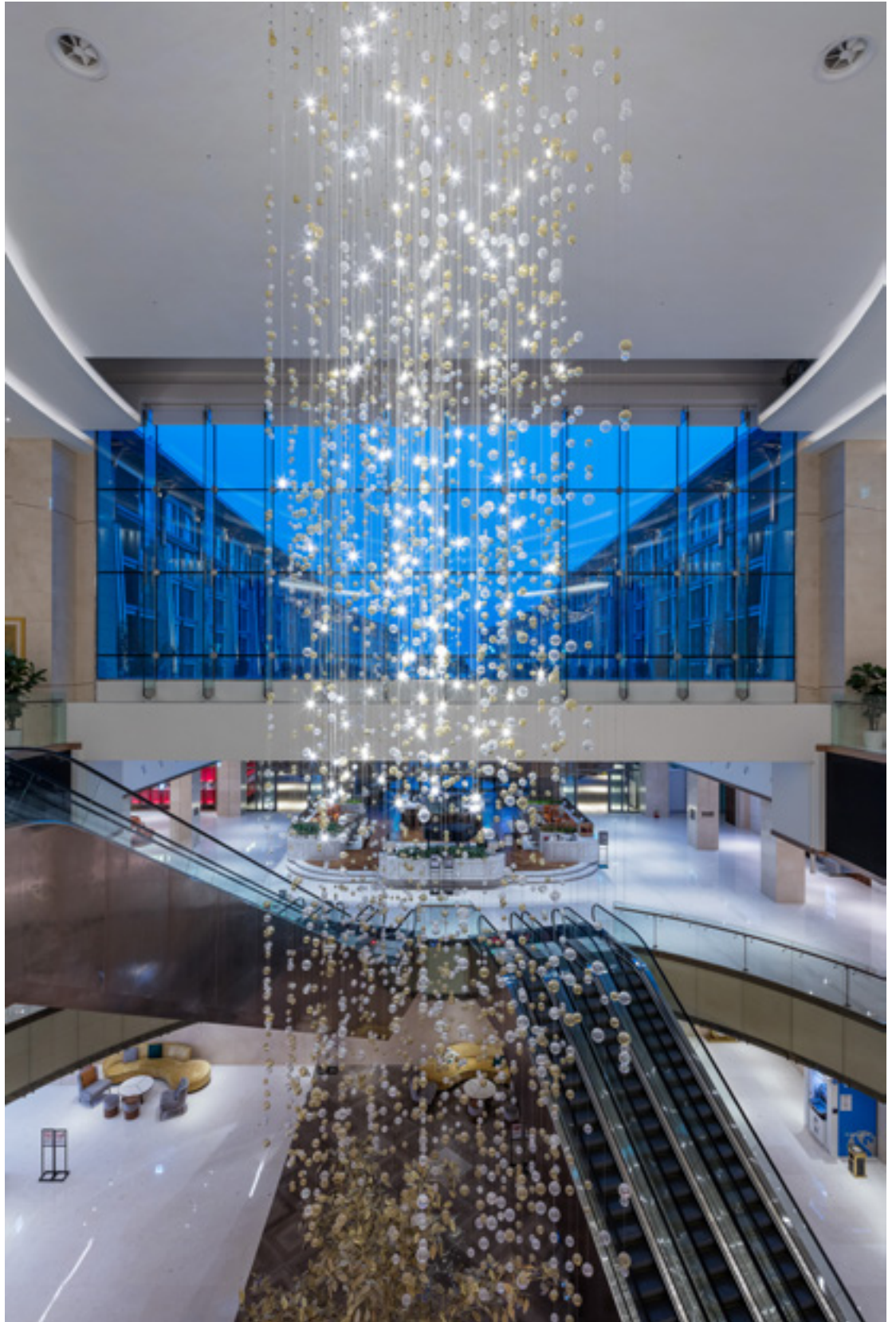
Our principal design here is called Crystal Rain because it imitates a gentle rain sprinkling the trees placed underneath. This installation includes 2900 handblown glass pieces and impresses by its size and the effect of contrasting clear crystal, metal nanocoated, and mother-of-pearl finished components. The rounded shape was also implemented in the lounge design. Forming three impressive glass globes, the handmade pieces in various shades of amber are complemented by elements with a golden nanocoating finish to give a sensation of true luxury. Our final design consists of delicate parts reminding of leaves flying in the wind. Made of sandblasted glass with mother-of-pearl touches, each unique component is suspended on wire lines, shaping the installation into a wave.



Lobby
Seogwipo-si, South Korea



Jeju Shinhwa World Marriott Resort
Seogwipo-si, South Korea





Jeju Shinhwa World Marriott Resort
Seogwipo-si, South Korea



Four Seasons Hotel Kuala Lumpur

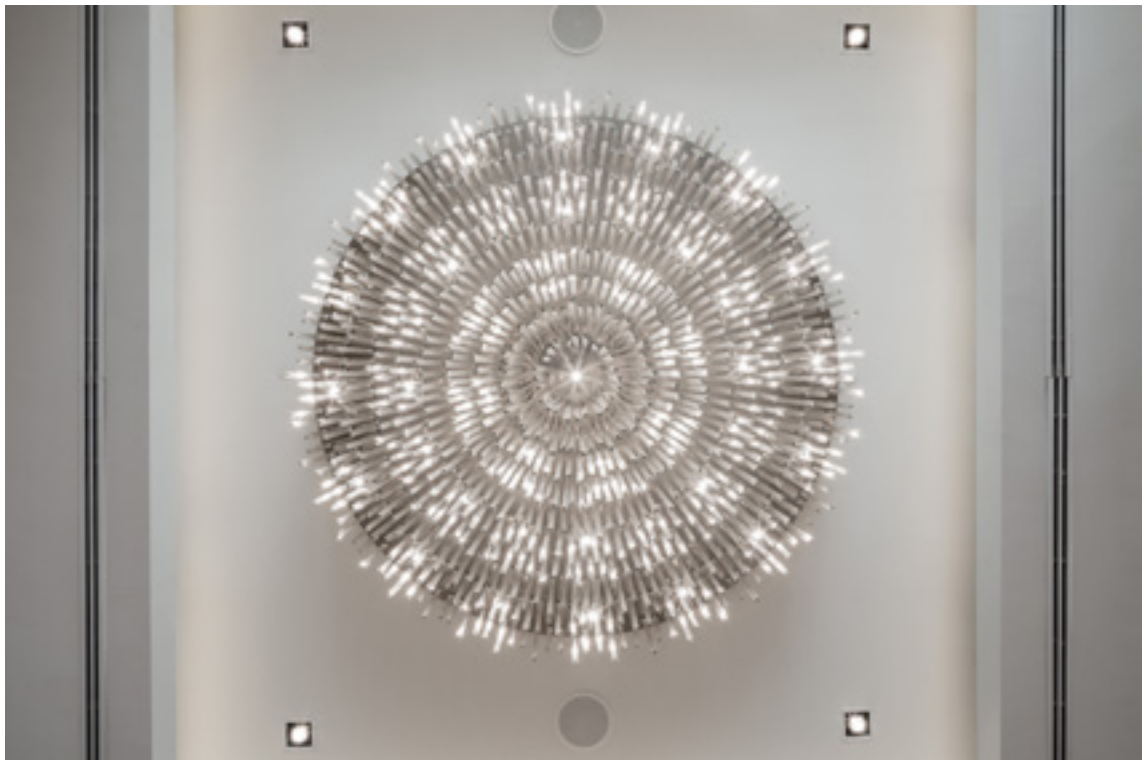
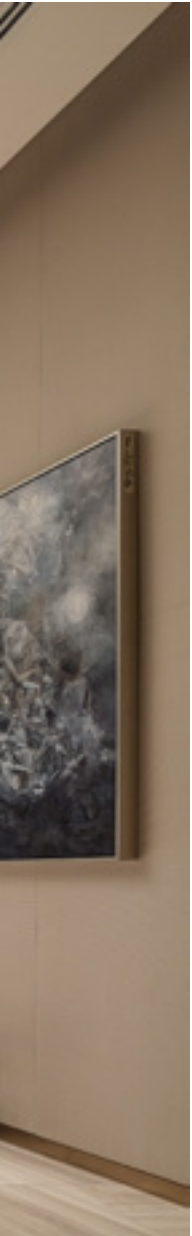
**The Four Seasons
Hotel Kuala Lumpur
embraces the
captivating pulse of
Malaysia's capital.**

Kuala Lumpur, Malaysia





Given the lobby's modernist look, we simply aimed for a more pared-down but still inventive and unique variation on the traditional chandelier. To achieve this result, we opted for triangular glass rods instead of classically shaped crystal components. The individual pieces' varying length enhances the design and produces a picture resembling a delicious layer cake. When observed from below, this installation creates the impression of a flower in full bloom. It includes a total of 868 components in seven different lengths ranging from 250 to 900 millimetres. The rods are made of profiled polished technical glass cut to the correct size.



Four Seasons Hotel Kuala Lumpur
Kuala Lumpur, Malaysia

The Address Hotel

**Place where premium
luxury and superior
décor is boldly reinvented
in ultra-modern hotel rooms
and exquisitely designed
meeting and event spaces.**

Dubai, UAE



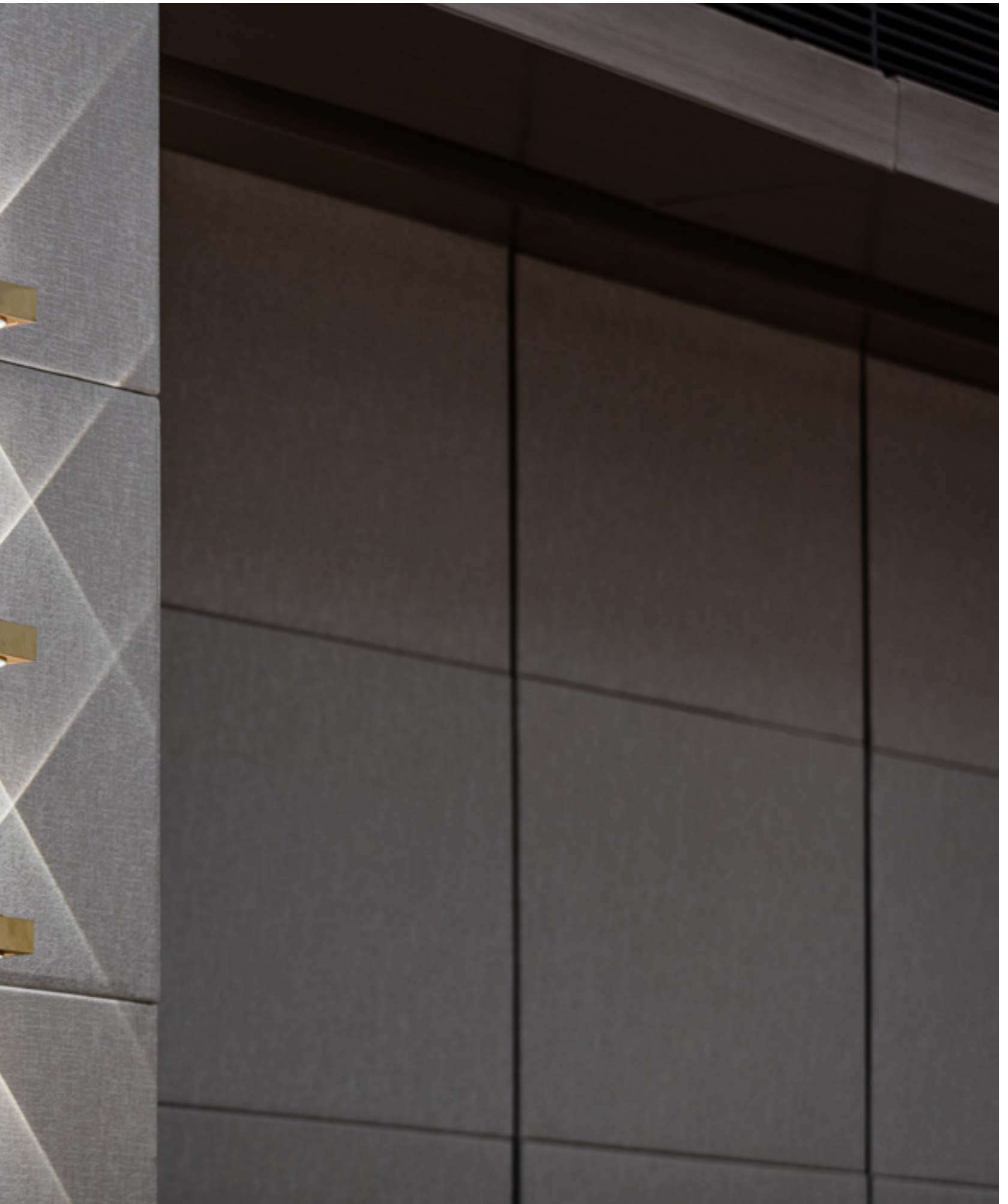




The Address Hotel is located in Downtown Dubai next to the famous Burj Khalifa and the number one shopping mall – The Dubai Mall. A place where luxury is boldly interpreted in the ultra-modern hotel areas. Cooperating with SSH Interior Design Studio, Sans Souci designers created the lighting installation in the Diamond Ballroom and adjacent spaces. Several grand chandeliers made of flat transparent glass elegantly illuminate the ballroom, giving a lovely, soft feel. Wall sconces with a dazzling mirror effect lend an intimate atmosphere to the whole interior.

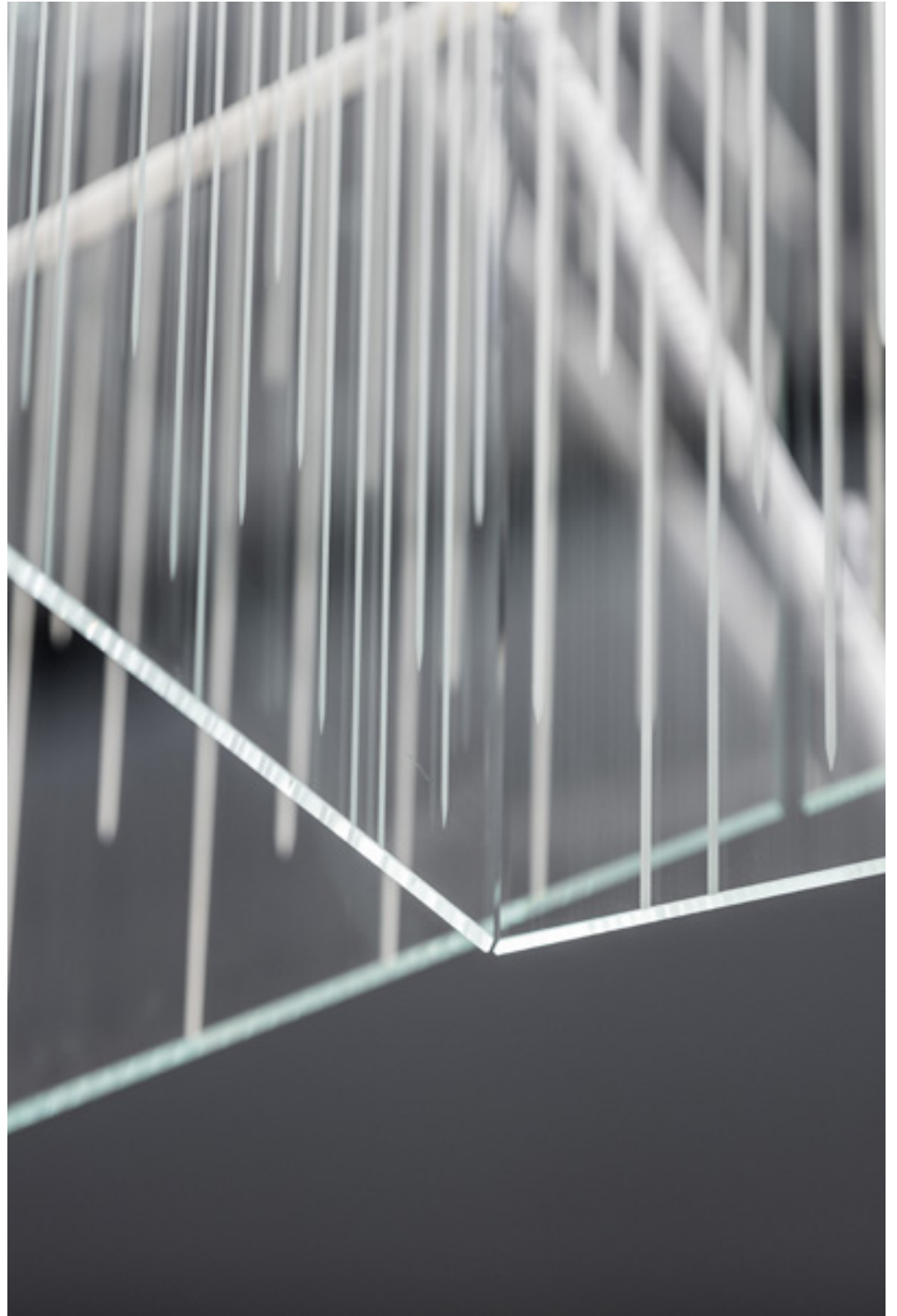
The Address Hotel
Dubai, UAE







The Address Hotel
Dubai, UAE



AlRayyan Hilton Hotel Doha

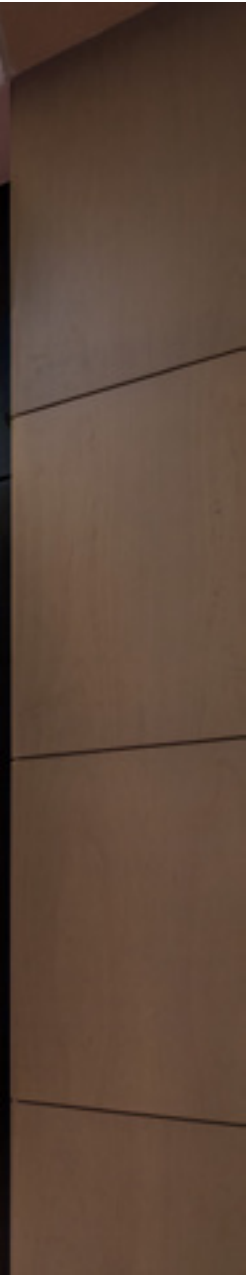
This all-inclusive resort takes pride in the chic and timeless décor. We were naturally honored to contribute by our tailored lighting installations.

Doha, Qatar





Bold colours and the abstract styling of our Splash installation definitely draw attention to the hotel's lobby. This piece emerged from a highly unconventional combination of slumped and handblown glass. To preserve the beauty lounge's spiritual feel, we developed a design in a half-sphered shape echoing a luminous dome formed from handblown glass globes. The ballroom and a relaxation corner are decorated by the handblown rows of calla lilies.



AlRayyan Hilton Hotel Doha
Doha, Qatar







AlRayyan Hilton Hotel Doha
Doha, Qatar



7132 Vals Hotel

**Experience for the
mind, body, and senses
with an impressive
architecture, including
the thermal baths by
architect Peter Zumthor.**

Vals, Switzerland



LICHTEN

Leuchte von
von Göttingen (1901-1966)





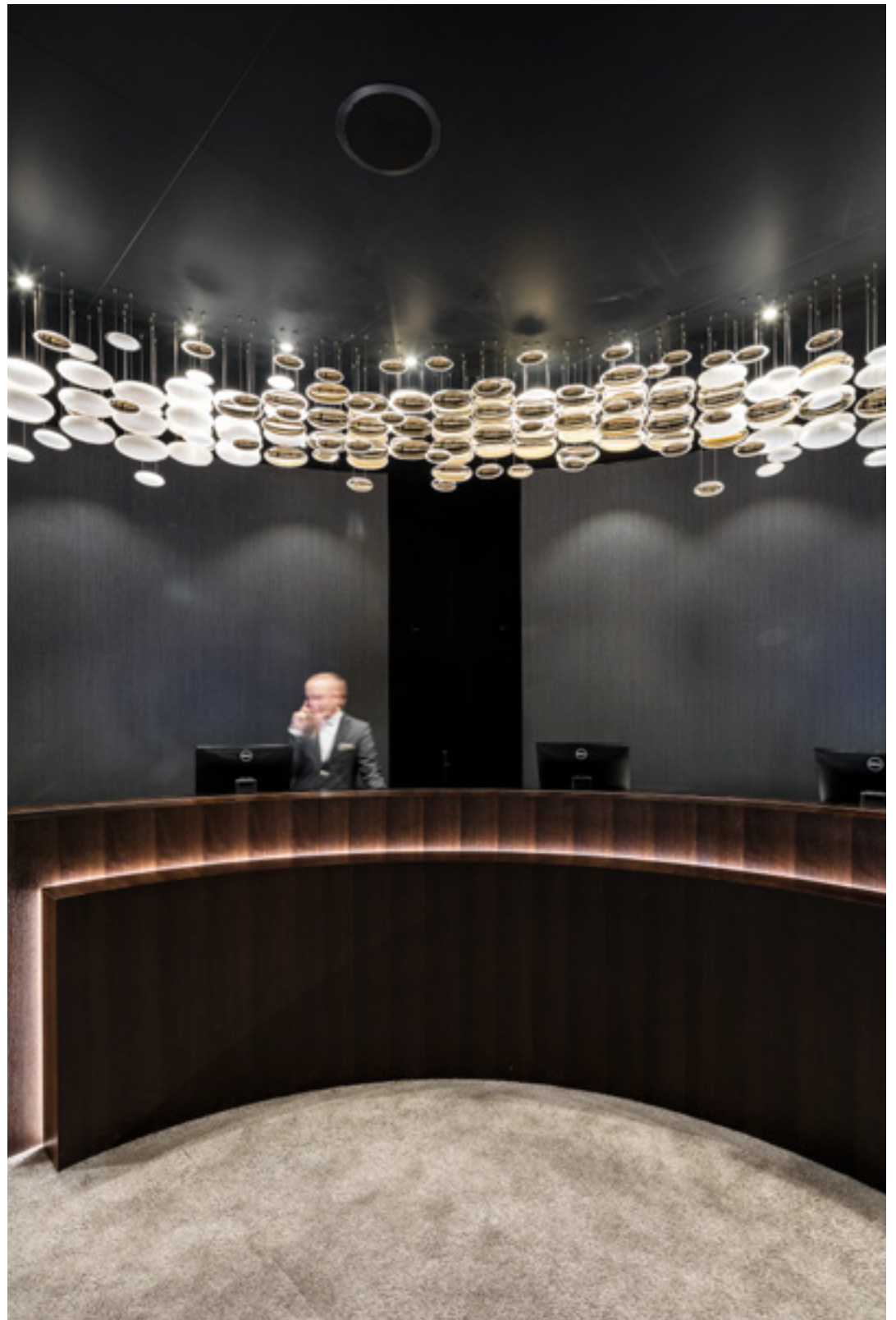


He created a magnificent, internationally acclaimed architectural masterpiece made from 60,000 slabs of Vals quartzite; the thermal baths were granted protected heritage status shortly after completion. In cooperation with the interior design company Thöny Projekt, we were delighted to provide our lighting installation Bowls to decorate the reception area. The beauty of this light fixture centers on a simple shape and exciting contrast. The smooth, handblown components were rotated 90 degrees and suspended with the convex parts facing one another. This creates an exquisite and pleasingly disheveled wave.

7132 Vals Hotel
Vals, Switzerland



7132 Vals Hotel
Vals, Switzerland



Widenmoos

**Splendid crystal
lighting installations
created from the
Symphony, Antlers,
and Pebbles collections
emphasize the glory of
this beautiful place.**

Reitnau, Switzerland





Widenmoos
Reitnau, Switzerland

An exceptional place where many personalities, socialites, politicians, or economists go to meet and network. A place where the first chapters of success stories are written. In the inspiring atmosphere of the Widenmoos, successful concepts, pioneering ideas, sophisticated strategies later put into action emerge in Widenmoos.





Owned by the Bühler family, the hotel has maintained its success since 1992. Sans Souci, working together with Carbone Design, took part in the recent renovations. Our designers created a medley of lighting objects for the lobby, meeting rooms, and the large dining room, inspired by the place's invigorating nature.



Widenmoos
Reitnau, Switzerland





Hotel de Paris Monte Carlo

The central theme in the interior design of the Hotel de Paris is a gold colour, which honors Art Deco. The hotel's most extensive suite, Prince Rainier III, is decorated with the best in savoir-faire, including our crystal chandeliers.







Columbus Hotel Monte Carlo

**Columbus Hotel Monte Carlo
maintains the feel of a
boutique hotel overlooking
the Mediterranean Sea,
the Princess Grace Rose
Garden, and the mountains.**

Monte Carlo, Monaco







Established by the Formula 1 racing champion David Coulthard, this polished three-star hotel is a favorite among the famous Formula 1 race drivers and their teams. Tasteful shades of blue and bronze are used everywhere in the hotel, from the lobby to the bedrooms. Moments of design extravagance include the hotel entrance displays with our Bowls installation in bronze nanocoating. Its contrasting colours and metal coating create a powerful eye-catcher.

Columbus Hotel Monte Carlo
Monte Carlo, Monaco

Maximilian Hotel

**Maximilian Hotel
fuses a refined
design with a luxury
comfort, welcoming
guests from all over
the world.**

Prague, Czech Republic





Thanks to a modernization led by Conran & Partners, the hotel reveals a new spirit in pastels that shift hues from room to room. The colours are combined with local art, beautiful bespoke lighting, and of course, hand-made Bohemian glass installations by Sans Souci. Reflecting on the urban cultural and architectural heritage, the design approach is playful and provocative, using brass and flat glass in a perfect skylight sculpture.



Maximilian Hotel
Prague, Czech Republic

Banana Island Resort Doha

The man-made Banana Island of the coast of Doha is home to our impressive 14-meter tall handblown crystal glass light installation. Freespirited yet simple, it enhances the ultimate vacation vibes of the resort.

Doha, Qatar







Banana Island Resort Doha
Doha, Qatar

Intourist Hotel

**Located on one of
the world's longest
promenades, the
hotel skilfully blends
modern features with
old-world sophistication.**

Baku, Azerbaijan





The decorative lighting in the lobby and B&B restaurant perfectly embodies this idea. The brilliant waves, inspired by the glistening sea, are created by small cut crystal spheres, pointing to the beauty of classical chandeliers, and are suspended on sleek silver rods, adding an ultimately modern dimension to the installation. The result is stunning simplicity and elegance.



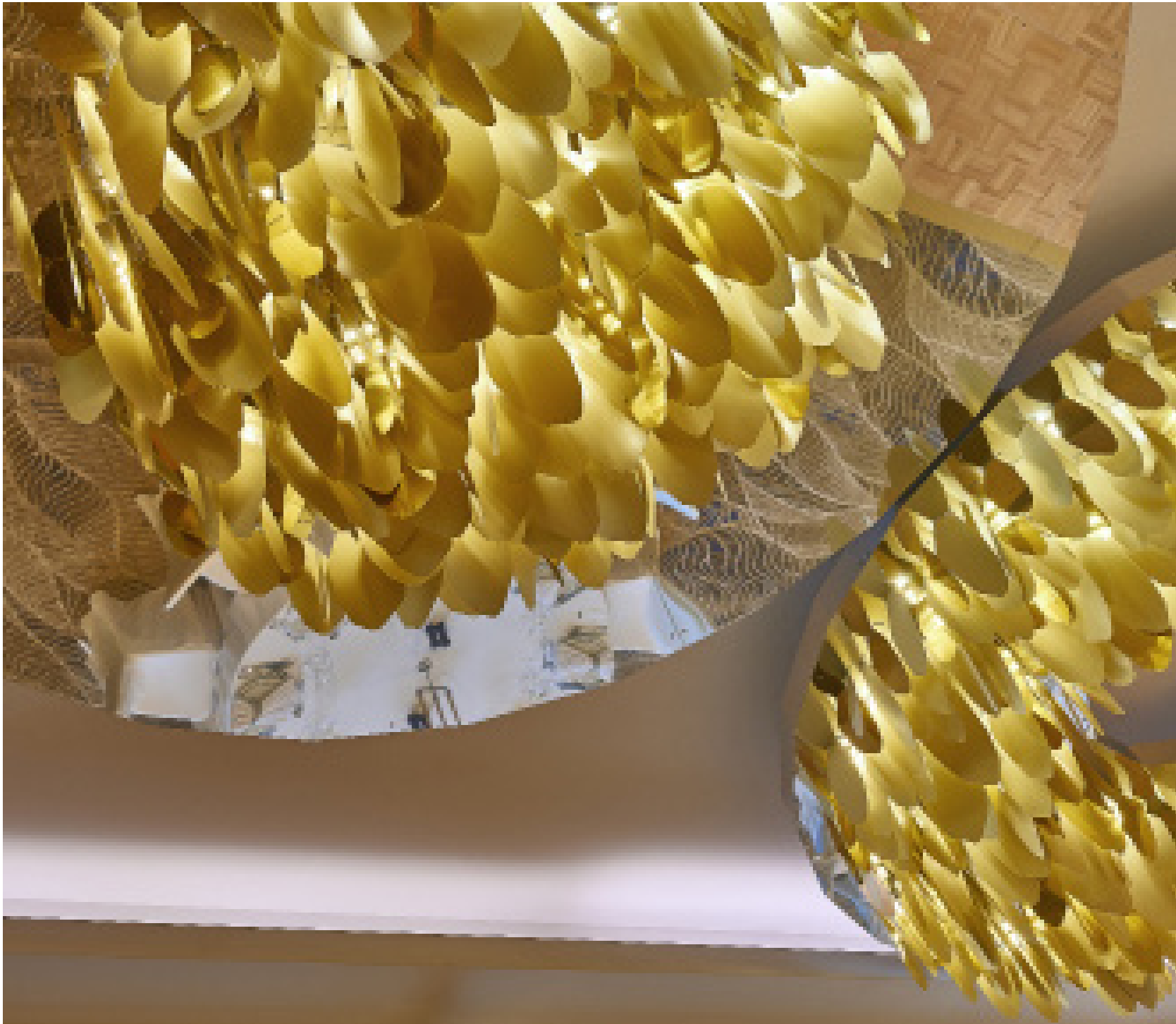
Intourist Hotel
Baku, Azerbaijan

Baku Marriott Hotel Boulevard

**Welcome to the
largest conference
hotel in Azerbaijan,
named after a seaside
promenade in Baku Bay.**

Baku, Azerbaijan

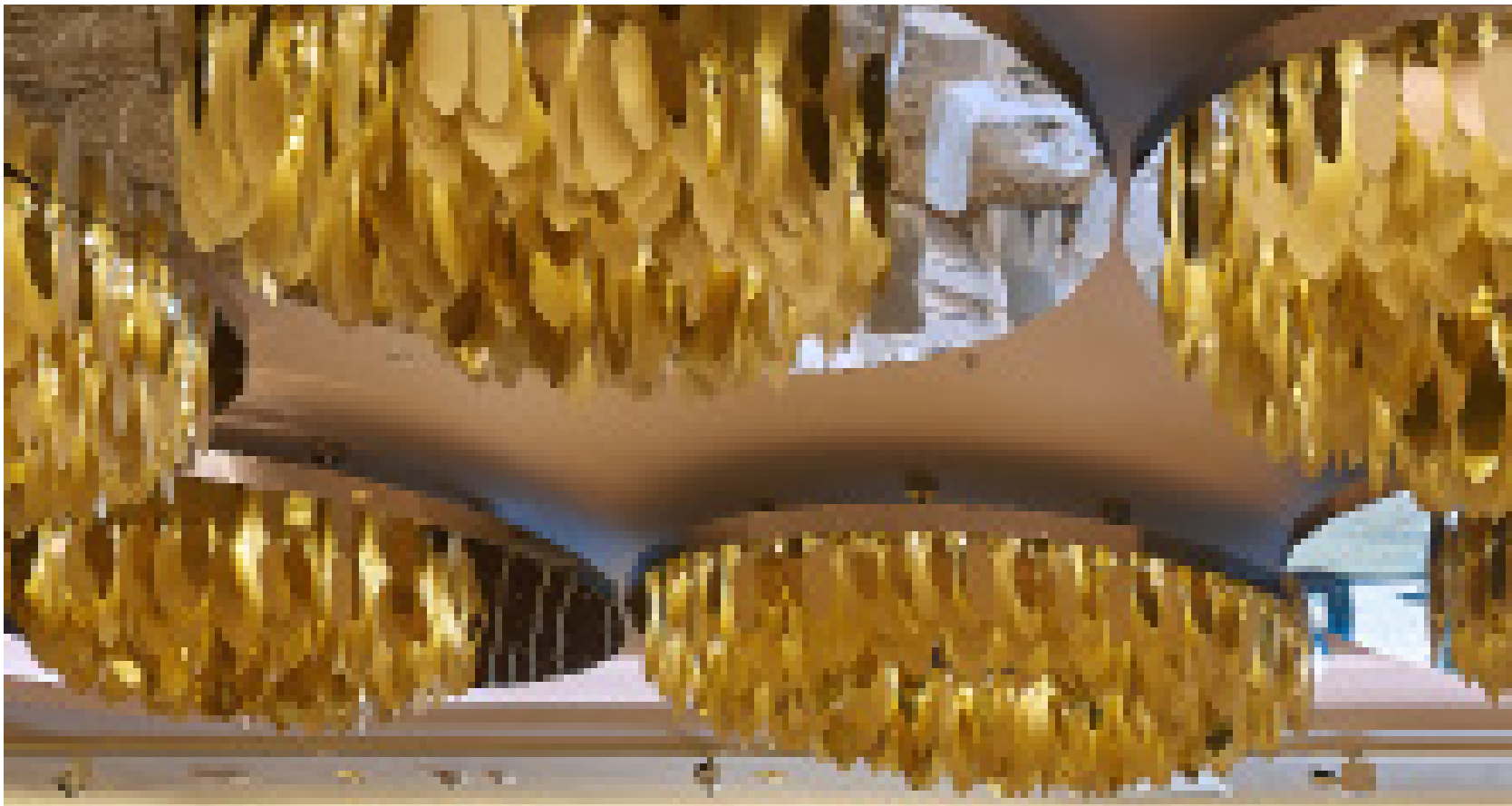


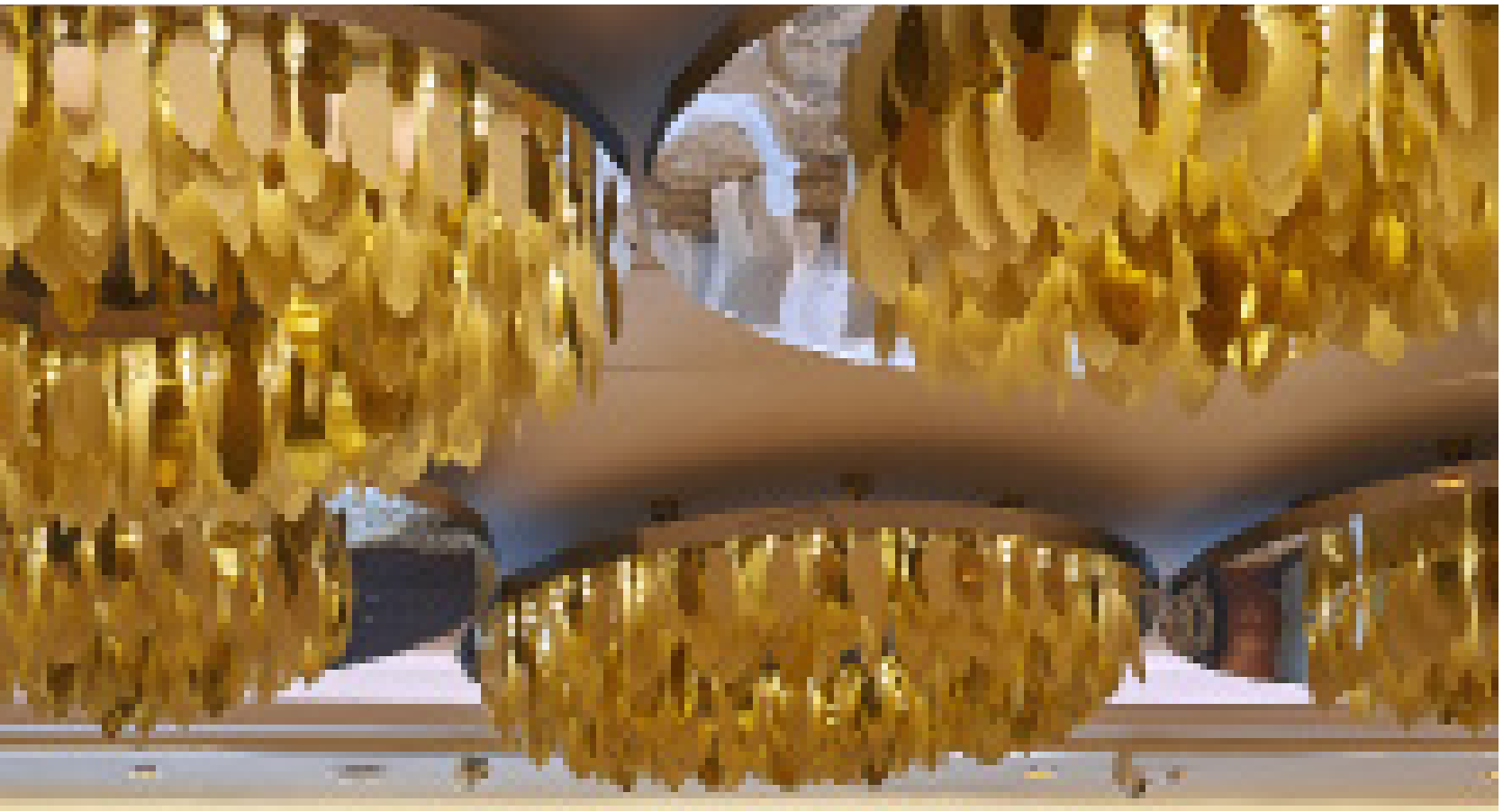




The ballroom easily accommodates a thousand guests and is illuminated by forty shining gold lighting installations to represent the sun's beauty and its warming rays. More relaxed organic shapes of crystal light fixtures decorate the extensive hotel spa area to help you wind down in sheer tranquillity.

Baku Marriott Hotel Boulevard
Baku, Azerbaijan





Sheraton Doha Resort

The five-star Sheraton Doha Resort on the famous west bay shore is home to our twenty six bespoke lighting objects. Crystal glass bars evenly arranged in rows work in many shapes, creating a warm and welcoming atmosphere.







Bochka Restaurant

Step into a different era. Sit by the fireplace and enjoy the warm glow of red hues, thoroughly complementing the exposed wood beams.

Moscow, Russia





Bochka Restaurant
Moscow, Russia

Classic crystal glass chandeliers, made by Bohemian artisans, create a sudden burst of sparkling luxury and opulence and transport you instantly into the midst of a wintery romantic fairytale.



Pavilion Prud Patriki Restaurant

This restaurant's interior design is a unique fusion of nature and decorative style. Sans Souci's bespoke chandelier combines crystals beads and handblown spheres with our iconic Vice Versa collection. An interesting and intricate centrepiece that perfectly complements the space.

Moscow, Russia





Restaurant
Moscow, Russia

Sans Souci was honoured to design main chandelier as well as a series of five lighting installations above the dining tables. The pieces are finished in gold and crystal soda hues, a great fit for the natural style of the interior. The main piece is comprised of almost 1,000 components of premium slumped glass in our unique Vice Versa design, which is adorned with more than 2,000 Bohemian crystal beads and handblown spheres. The result is a dazzling a one-of-a-kind centrepiece measuring 9 metres long.



BESPOKE

RESIDENCES

Our private space. Our home. The space where we live our everyday lives, where we seek peace, where we laugh, and where we are surrounded by the people and pieces we like most. The interior design and the lighting we choose can contribute to our well-being and allow us to feel our best. Sit back and enjoy a tour around some of the private residences we have worked on, each tailored to the individual customer's needs and tastes.

Four Seasons Private Residences

Two lighting installations adorn the apartments at Four Seasons Private Residences Dubai at Jumeirah, a standalone luxury residential project overlooking the Dubai Canal, located a stone's throw from the eponymous hotel offering exclusive access to its amenities and services to the lucky homeowners.

Dubai, UAE







Four Seasons Private Residences

Dubai, UAE

Described by its designer as the fusion of the East and the West, the Arabian seafaring tradition reinterpreted with a chic, timeless European sensibility, Four Seasons Private Residences Dubai at Jumeirah constitutes high-end living at one of the most prominent and sought-after addresses in the cosmopolitan city centre of the UAE's capital.

The first piece draws inspiration from our Opera collection, bringing drama into the interior with components made of technical glass in argent lustre, whilst the other one, based on our staple Bowls collection and comprised of handblown crystal glass components in a combination of gold and opal colour with aurum nanocoating, brings an aura of sophistication synonymous with the Four Seasons brand. A match made in heaven.



Four Seasons Private Residences
Dubai, UAE







The Palm Jumeirah Residence

A bespoke lighting installation inspired by our Frosty Leaves collection swirls through the atrium of a luxury villa in Palm Jumeirah, Dubai, UAE, a palm tree-shaped archipelago of artificial islands made mostly of sand dredged up from the bottom of the Persian Gulf.

Dubai, UAE





We created this breathtaking fixture in the shape of a helix for a private residence in Palm Jumeirah, Dubai, UAE, often nicknamed the eighth wonder of the world due to its sheer grandeur and home to first-class retail amenities and glitzy hotels, including the famed Burj Al Arab.



The Palm Jumeirah Residence
Dubai, UAE



The individual handblown glass components in crystal colour with mica and a stainless steel finish, reminiscent of snow-covered foliage straight from a fairy tale, not only constitute a pinnacle of artisanship but, in combination with the accompanying gyrating decorative beam, create a vortex of ethereal beauty. Truly a sight to behold!



The Palm Jumeirah Residence
Dubai, UAE

The Palm Jumeirah Villa

**Our Vice Versa
collection, in crystal
and argent colours,
creates a strong
statement within this
Palm Jumeirah villa's
interiors.**





The Palm Jumeirah Villa
Dubai, UAE



The Palm Jumeirah Villa
Dubai, UAE

Different compositions were selected across the interiors in this Palm Jumeirah villa, created from our Vice Versa collection. The strong colours underline the darker interior of the living room, and a similar colour combination was installed in the entrance hallway, to create spectacular centrepiece.



BVLGARI Residences

**A shimmering jewel set
on a seahorse-shaped
island in Jumeira Bay,
The BVLGARI Resort
brings Mediterranean
style to Dubai.**

Dubai, UAE







BVLGARI Residences

Dubai, UAE

The 1.3 million square meters large resort accommodates a hotel, yacht club, restaurants, a residential complex, and 15 mansions as the pinnacle of nautical-inspired luxury. To complete the experience, we have contributed our state-of-art luxury lighting installation inside two of the mansions and in the residential complex. The Shadow Box Penthouse at the BVLGARI Residences has a particular free-spirited feel that changes constantly depending on the time of the day, month, or year, due to the shadows created by mobile mesh screens. To encourage this artful play of light, we created a colourful handblown crystal glass installation in rich cobalt and amber hues combined with metal lanterns reminiscent of old market finds to complete the Bohemian touch. Collaborating on this project with interior architects from studio Idea Art, we elevated Bohemian luxury to another level.



BVLGARI Residences
Dubai, UAE



Regent's Crescent Apartment

**Contemporary design that
combines two collections
in one installation.**

**Contrasting shapes and
colours create an intriguing
piece that flows through
the stunning living space.**

London, UK







Regent's Crescent Apartment
London, UK

Together with Alex Kravetz Design, Sans Souci created a bespoke lighting installation to crown this beautiful contemporary living space. Specially designed for a private residence in London's iconic Regent's Crescent, it enhances the high ceilings and interior design throughout. The unique chandelier combines components from our Bowls collections. Handblown crystal bowls and spheres are finished in contrasting hues, opal with bronze and black. Together they create a bold centrepiece for the space that plays with light and dark.

Private Residence

**Classic designs
from our best-loved
collections, produced
in golden tones, crown
the contemporary
interiors of this London
townhouse.**

London, UK





Private Residence
London, UK

We produced and installed a series of bespoke installations for this private residence in London. Sans Souci's Symphony and Bowls collections were specially selected and produced in golden hues to complement and elevate the interiors' neutral palette.





Private Residence
London, UK

A 12 meter long chandelier from the Symphony collection runs down the centre of the staircase. A collection of glass tubes, each nanocoated in aurum and argent and engraved with a diamond motif, cascade down the length of this London townhouse. Two installations from our Bowls collection glide through the kitchen diner area, connecting the interiors and leading to the outdoor space.





Abu Dhabi Villa

Insignia Design Consulting worked together with Sans Souci to deliver the lighting design for the interior of this luxury villa, located in Abu Dhabi. This contemporary space features three Sans Souci installations including two original designs and one bespoke installation taken from our Bowls collection.





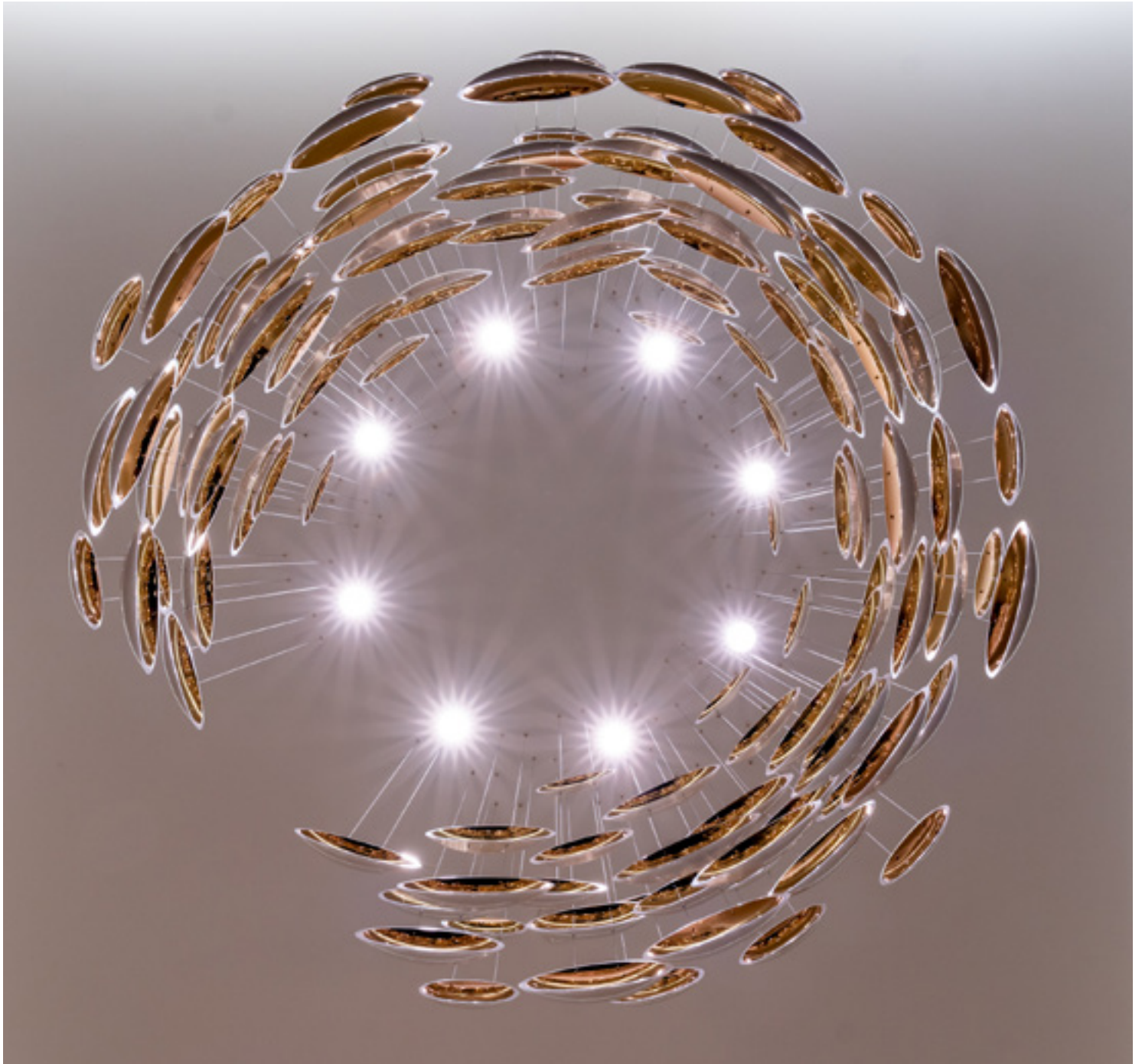


Abu Dhabi Villa
Abu Dhabi, UAE

The first installation crowns the luxurious dining area. A stunning centrepiece that plays with lines and shapes, formed of a combination of handblown glass balls and leaves. The glass balls are finished in different sizes and effects including soda effect, sandblasted and clear. They are placed beside the delicate leaves in cognac hues to create a rich design that elevates the large dining space. The second piece welcomes visitors into the entrance lobby and is made from handblown glass balls with soda effect finish. This design is striking in its simplicity and elegance, drawing attention to the height and natural light of the space.







Abu Dhabi Villa
Abu Dhabi, UAE

The final piece was created from our best-selling Bowls collection. Custom-made for the interior in the timeless colour combination of opal glass with aurum nanocoating, it adds sophistication to the stylish interior design.

Dubai Hills Estate Villa

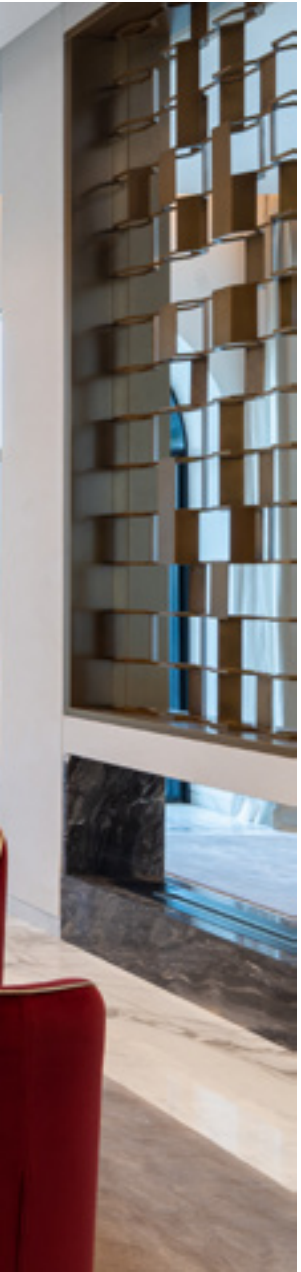
A series of eight lighting installations adorn this luxury villa in Dubai Hills Estate, a premium residential area located within Mohammed Bin Rashid City, a mixed-use development in Dubai, UAE, named after the current ruler and often described as “a city within the city”.



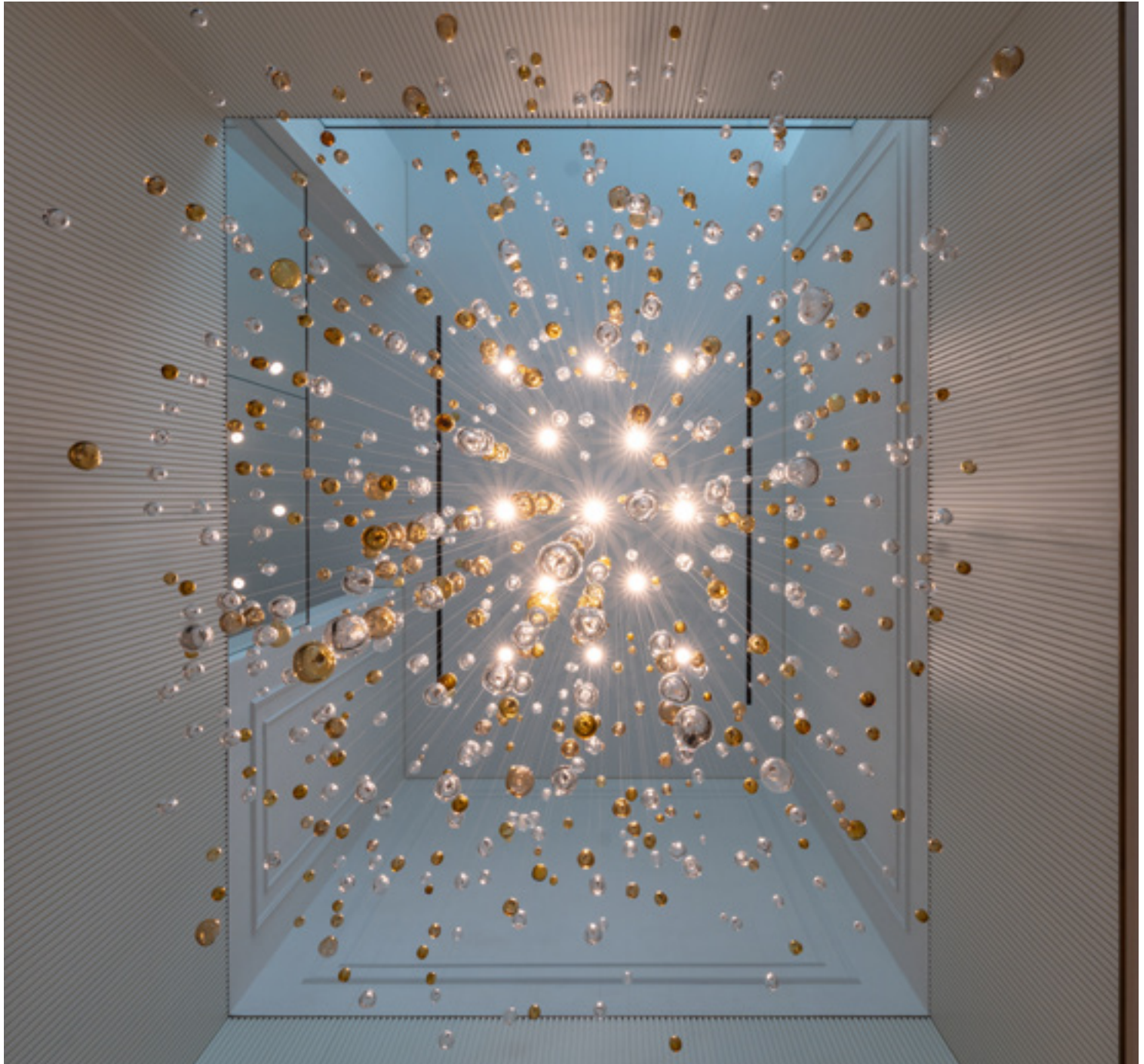


Dubai Hills Estate Villa
Dubai, UAE

Five of the eight fixtures were inspired by some of our best-loved collections, namely Bowls in cognac, crystal, and gold colour with an added decorative stainless steel baseplate with a gold lacquer; Contour and Frozen in crystal colour with gilded edges and a stainless steel finish; Flamenco in crystal colour; and Lure in gold and crystal colour with a soda effect, both with a polished brass finish.







Dubai Hills Estate Villa

Dubai, UAE

The remaining three were created entirely bespoke, with designs reminiscent of stalactites in the case of Icefall and two geometric shapes – cylinder and sphere – in the case of Tubes and Balls, respectively. The first was made in crystal colour with a soda effect, the second in a bronze colour with a rose gold nanocoating, and the third in an even mix of cognac and crystal colour with a polished brass finish.





Dubai Hills Estate Villa
Dubai, UAE

From the main foyer to the lounge area to the kitchen, each lighting installation constitutes the ultimate centrepiece for the intended space, employing a wide gamut of colours and finishes, showcasing our almost inexhaustible design range as a result.



Sharjah Villa

**Each of these
installations is truly
unique with every design
specially tailored to the
contemporary interiors,
whether adapted from
existing collections or an
original design.**

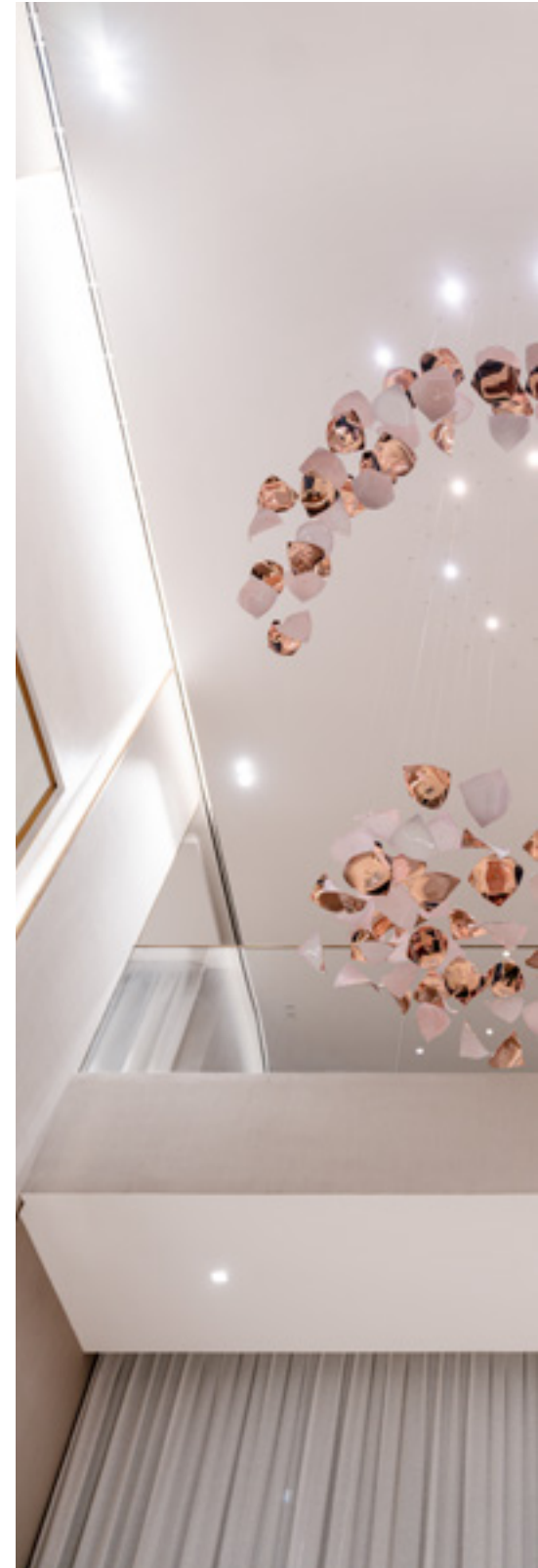




Working alongside ELE Interiors, a leading design studio in the Middle East, we designed and created a series of bespoke installations for this stunning contemporary villa in Sharjah, UAE. This included adapting some of our best-loved collections Kerchiefs, Pebbles and Vice Versa by tailoring formations, colours and coatings to perfectly complement the interiors. We also created three entirely original designs specially for the space. These new designs take inspiration from classic Middle Eastern motifs as well as nature, playing with light to create the striking centrepieces for the luxurious interiors.



Sharjah Villa
Dubai, UAE



Sharjah Villa
Dubai, UAE

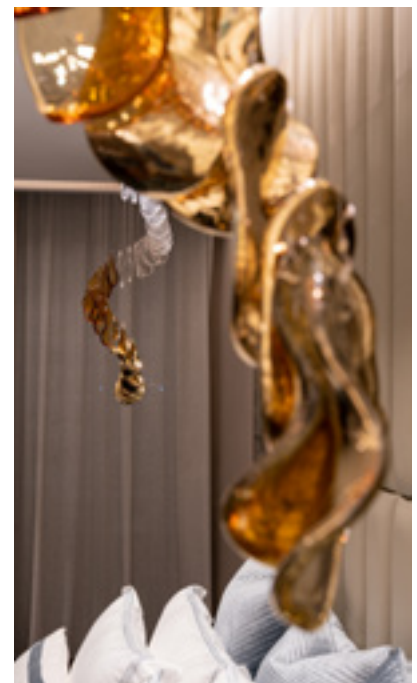




Sharjah Villa
Dubai, UAE



Sharjah Villa
Dubai, UAE



Villa Richter

**Light the life you're living.
Sans Souci's Bond collection
combines two pendants –
one convex and one concave
– created from handblown
glass, expertly nanocoated
and sandblasted.**





Take a closer look at these designs installed at Villa Richter, Prague. Set in the heart of the oldest vineyard in Bohemia against the backdrop of Prague Castle, this collection sees two beautifully crafted glass pendants - one convex, one concave - fitted together with an integrated light source and finished with metal nanocoating.



Villa Richter
Prague, Czech Republic





Jumeirah Islands Villa

**Our Frozen collection,
including a range of
glass-making techniques
and colours were used
to design the perfect
ambience for Jumeirah
Islands luxury villa.**





Jumeirah Islands Villa
Dubai, UAE

Designed by C+O Architects, Sans Souci lighting installations are featured throughout villa's interiors. Handblown and gilded crystal petals form an elegant centrepiece in the dining area. Delicate glass leaves in crystal and blue hues float through the space in dressing room. Crystal petals were specially crafted and coloured to create a tranquil bedroom interior.









Jumeirah Islands Villa
Dubai, UAE





XXII

Carat

**Welcome to XXII Carat,
a luxury residential
development in Palm
Jumeirah, Dubai. An awe-
inspiring residence of 22
luxury villas stands as a
benchmark for bespoke
interior design.**







XXII Carat
Dubai, UAE

The interior of two villas features lighting installations from our iconic residential collection Airy. The colours range from rich cognac hues to complete transparency, with some pieces partially or entirely gilded with our innovative metal nanocoating process. Each handblown crystal feather is a unique original, offering a free-flowing glow that masterfully complements the luxurious tranquility of the living room and entrance hall or, indeed, the entire residence. There is no need to tread lightly here; these feathers won't ruffle, only sway gently to welcome you in.



XXII Carat
Dubai, UAE



Dubai Hills Villa

**Our Rebels and
Kerchiefs collections
were selected as the
centrepieces for
an elegant interior
in a Dubai Hills villa.**





Dubai Hills Villa
Dubai, UAE



This bespoke lighting design incorporates two of our signature collections, specially selected to complement and elevate the contemporary interiors. Rebels, designed by Rony Plesl, are rebellious lamps, suspended in the air to create a centerpiece above the dining table. This installation was created using a combination of handblown black glass and crystal nanocoated brass. Kerchiefs feature sculpted pieces of opal glass with a contrasting metal finish, and float effortlessly in the space like a silk scarf.





Ham Villa

**This villa represents
a beautiful example of
modern architecture
combined with
traditional Arabic
elements.**







Ham Villa
Dubai, UAE

As a dominant piece of the dining area, Bows, a handblown crystal glass lighting installation finished with metal nanocoating, highlights this interior's luxury ambience. Cool white combined with warm gold tones, the impressive decoration shows the exceptional approach to design. A delightful and charming living room interior combines Arabic-style motifs and classical notes. The Flacons are a beautiful illustration of the Arabic-inspired style in the interpretation of a lantern.



Ham Villa
Dubai, UAE





Hollywood Hills Residence

**Making a grand
entrance in Hollywood
style through the
modern lens.**

Los Angeles, USA







Hollywood Hills Residence

Los Angeles, USA

This private residence is finished in a Hollywood Regency décor – everyday elegance infused with the essential high-shine lacquered finishes and metal is a nod to Art Deco decadence. When you walk into the hall, you immediately spot the Kerchiefs installation with the golden nanocoating welcoming the decadent and marvelous style, projecting quiet sophistication and confidence.

ABN Residence

Based on one of our all-time favorite designs – Diamonds – our collaboration with Urban Zen and project partner Uber Projects consisted of providing a lighting installation as a distinguished decoration for the main entrance.

Hyderabad, India





ABN Residence
Hyderabad, India

Conceptualizing a generous space with high ceilings, the outcome was expected to develop this simple component's transformation into the envisioned bespoke artwork. The glittering effect of the installation is reproduced by combining the surface cutting with metal nanocoating. Arranged in unexpected patterns, our refined Diamonds touch complex detailing and reveal mesmerizing magic when welcoming visitors.







Rajapushpa Villa

**The Aurora
installation was
chosen to shine in
the living room of
a private villa in
Hyderabad, India.**

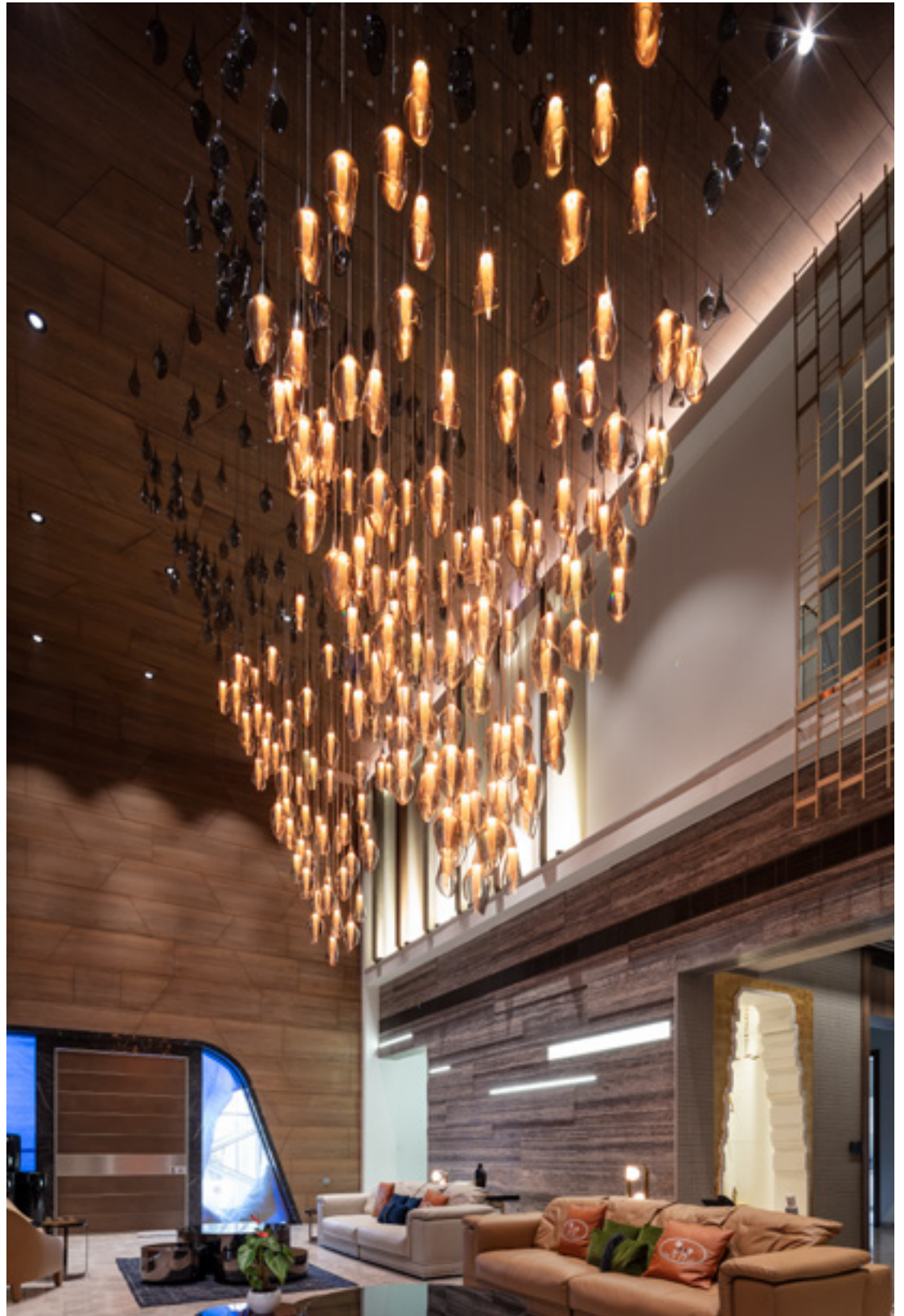
Hyderabad, India





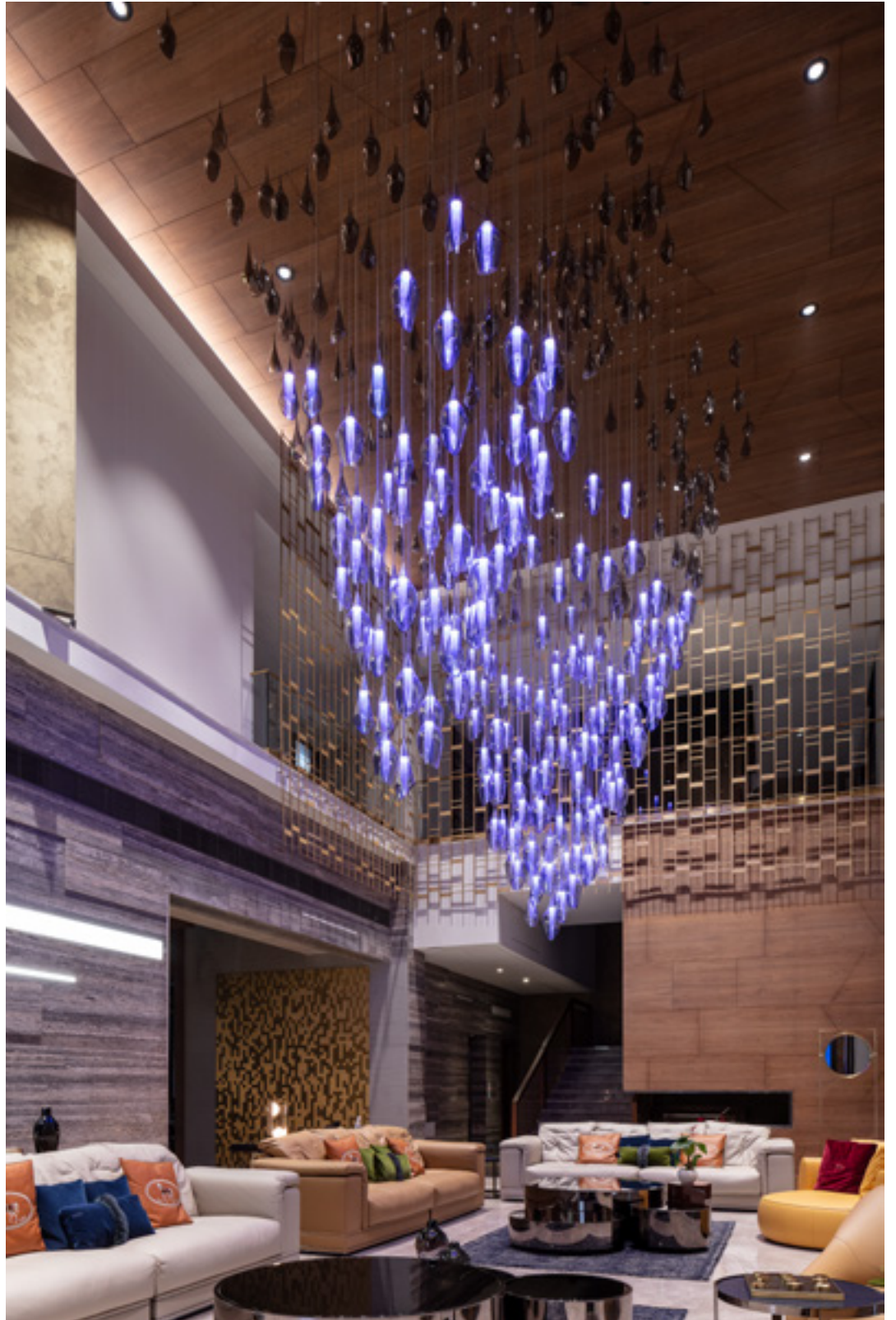
Rajapushpa Villa
Hyderabad, India

Each pendant is made of two parts, a handblown crystal-clear drop with a soda effect inside and a crystal-clear cap with a silver nanocoating finish. We combined the handblown glass elements in a celestial play imitating the fascinating phenomenon that exists in polar regions and would be very rare in this latitude.





Rajapushpa Villa
Hyderabad, India



BESPOKE

PUBLIC SPACES

Contributing to creation of the public spaces with a lighting or art installation is a special discipline. It can be an airport or train station where hundreds of passengers pass through every day or an opera house where you visit for a special experience. With these projects it is critical to respect the environment and history of the place when designing a piece, whilst bringing something fresh and fantastic to the space. Take a look at some projects we were honoured to be part of.

One Manhattan Square

**An extraordinary
piece of art echoing
distinction and design
differentiates this
property from others.**

New York, USA







The light sculpture above an extensive staircase invites you to step inside this luxury residential tower and explore the installation. More than 1150 individual components were installed here, measuring 9 meters long, 2.5 meters high, and almost 4 meters wide. It is one of the largest Sans Souci installations in a residential building. Smooth, handblown Bowls are rotated ninety degrees and suspended with the convex parts facing one another creating a polished wave. White colour and gold nanocoating finish, with a touch of black, elevates this piece from the light fixture to an art object completed by the stunning location.

One Manhattan Square
New York, USA





Sheremetyevo International Airport

**Sans Souci was chosen
to create the main
sculpture lighting for the
new VIP departure lounge
in the busiest airport in
Russia, Sheremetyevo.**

Moscow, Russia





Sheremetyevo Airport
Moscow, Russia

This luxurious space is decorated with soothing, earthy tones and rounded shapes ideal for providing a relaxing atmosphere to unwind amid the travel-related bustle. As the centrepiece, our lighting sculpture preserves the organic theme and adds an expressive touch. We were aiming for a firmly modern take on the timeless symbol of the tree. Our piece symbolizes the connection between the sky and earth and the relationship between all forms of creation.



Waterfront Market

**Honored to play part
in this noble endeavor,
we wished to pay our
tribute by designing
our lighting sculpture
in a maritime spirit.**

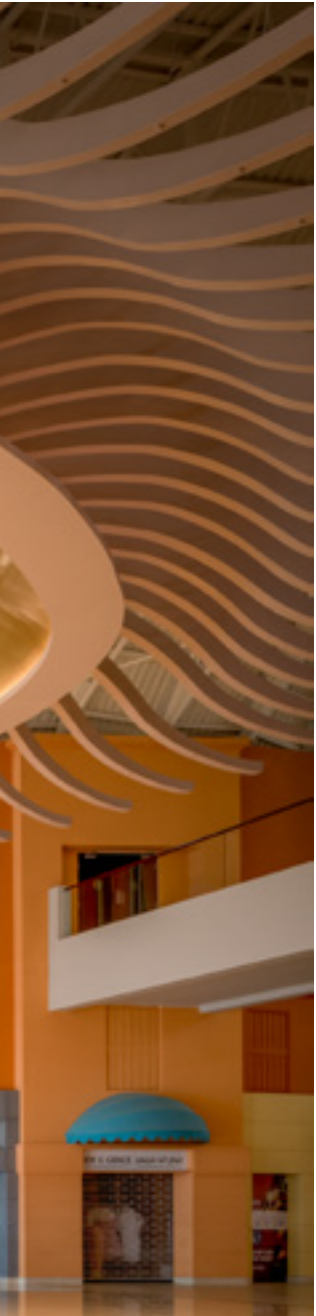
Dubai, UAE





Waterfront Market
Dubai, UAE

Located in the city's heart, the Waterfront Market constitutes both a leading shopping destination, blending traditional Emirati souks with an ultra-modern multicultural marketplace and a cultural activity hub. The Waterfront Market architecture builds on the priceless heritage and iconic status of the old Deira Fish Market. Our artwork resembling a school of fish forming an infinity sign adorns the central atrium of the building. It is made of 1340 handblown crystal pieces in yellow, crystal, amber and gold metal nanocoating.

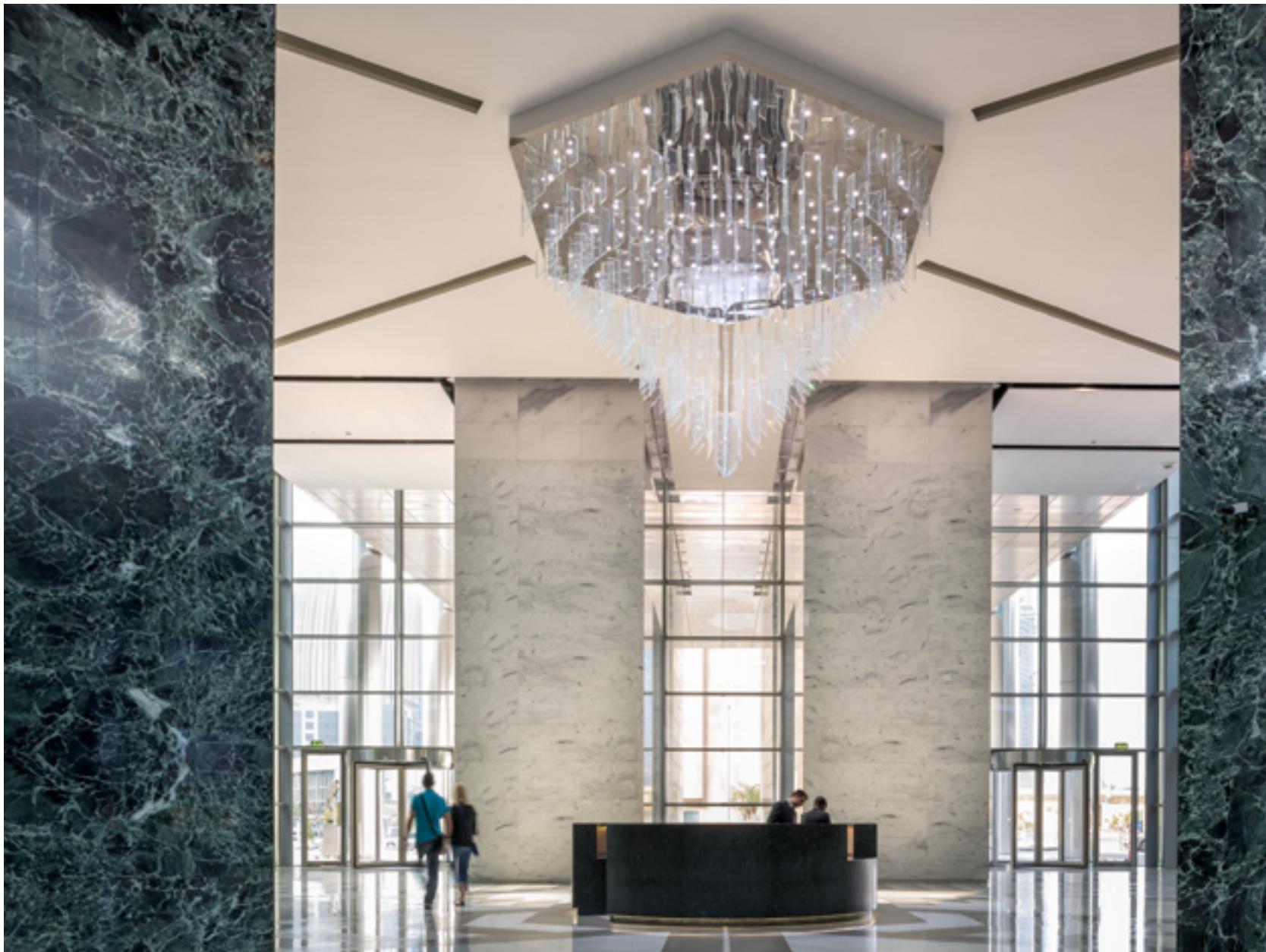


Central Park Towers

**Dubai International
Finance Centre is the
leading economic hub for
the Middle East, Africa,
and South Asia. It provides
a world-class platform
connecting the region's
markets with Europe, Asia
and the Americas.**

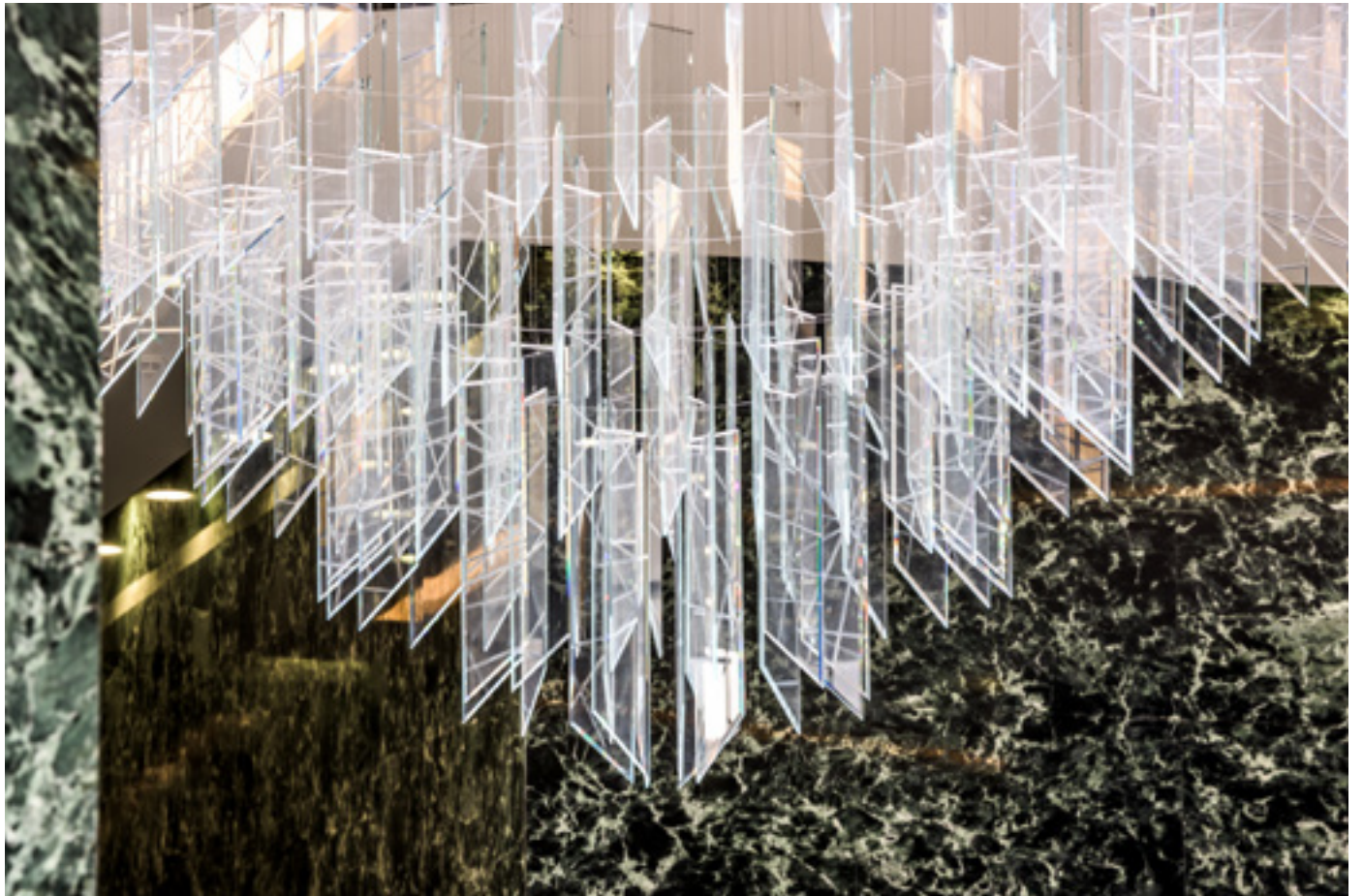
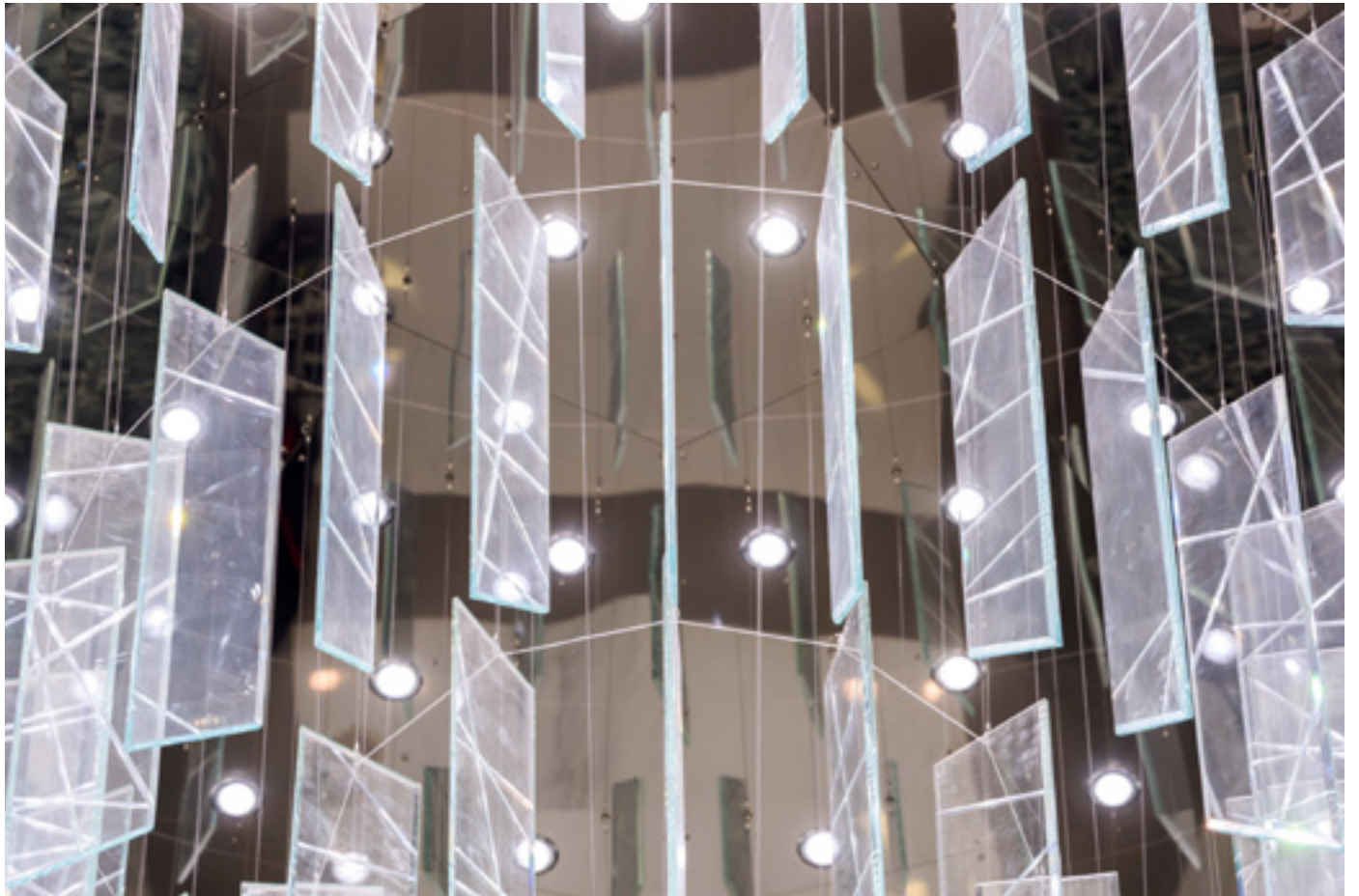
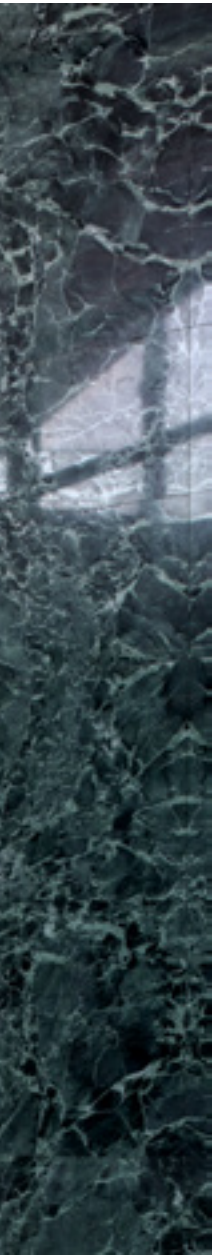
Dubai, UAE





Central Park Towers
Dubai, UAE

Sans Souci brightens the centre's public areas with light installations created of crystal glass prisms that decorate the residential and office towers' great premises. This ice-like component has the surface engraved and cut edges. These features allow for spectacular effects in perfect harmony with light and design.







Central Park Towers
Dubai, UAE

Jetex FBO VIP Terminal

With the opening of the world's largest facility for private aviation, Dubai South has raised the bar on luxury travel, helping redefine the passenger experience thanks to its visually rich interior.

Dubai, UAE

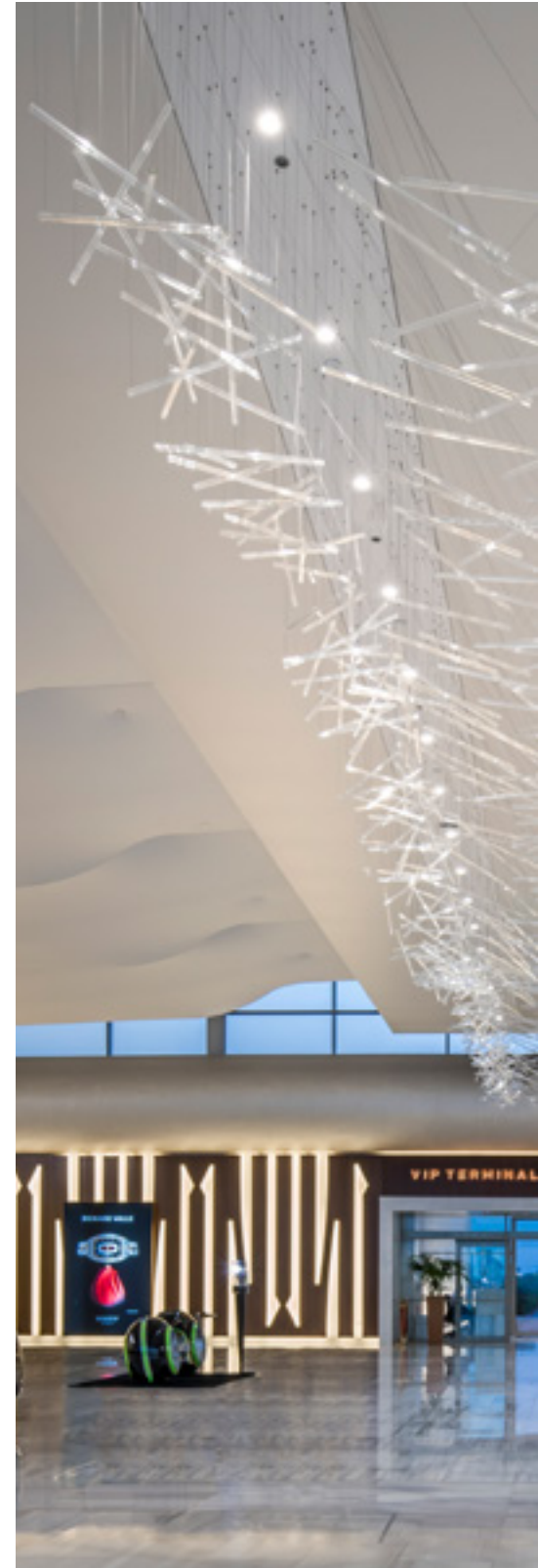




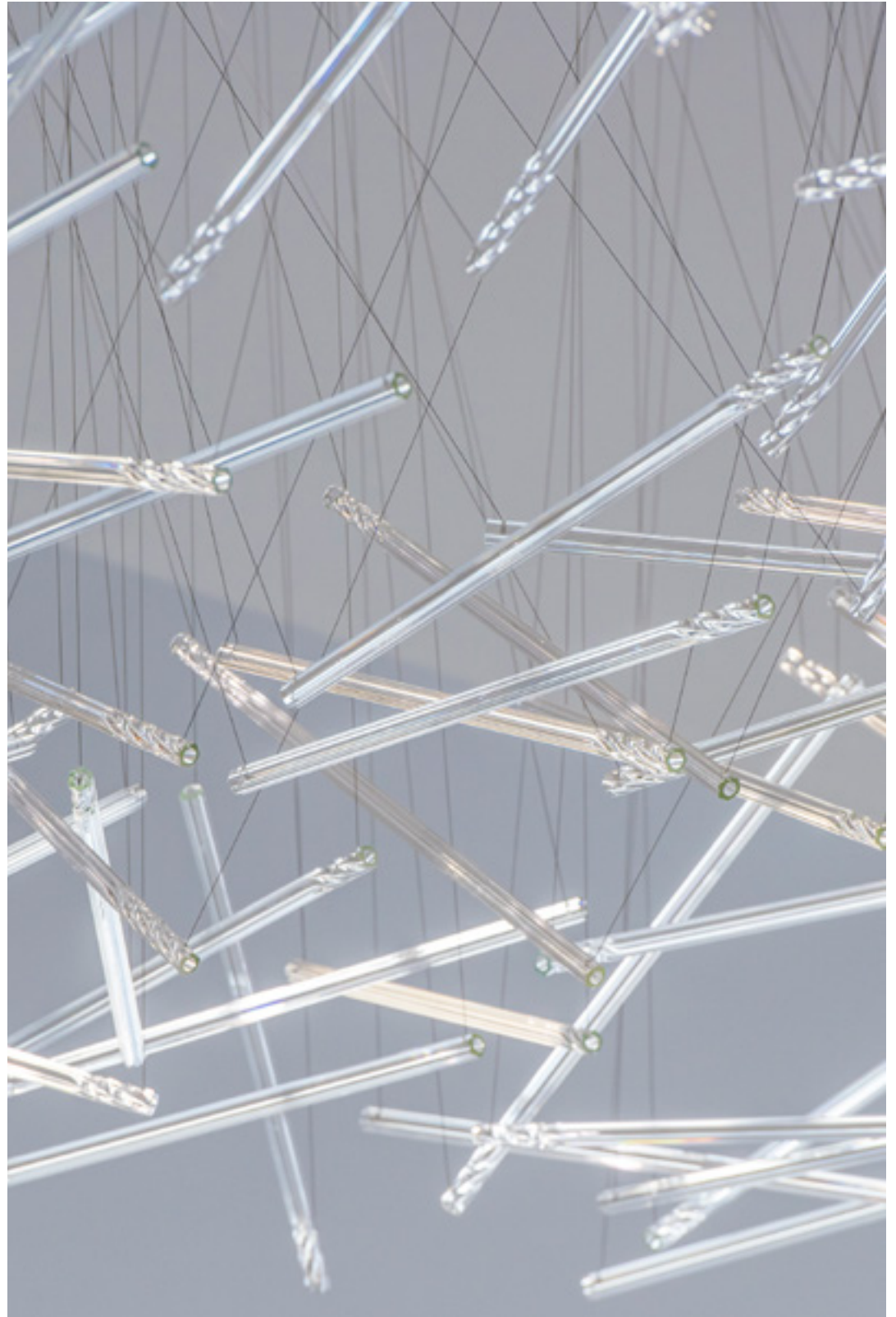
Jetex FBO VIP Terminal
Dubai, UAE



When you land in Dubai with your private jet, you will be greeted by a new VIP airport terminal, currently the largest of its kind in the world. Offering comfort in terms of functionality and design, the terminal caters solely to an exclusive clientele. The exterior of the building features a theme of aerodynamic airflow on a wing. The smooth, straight lines gradually advance into the interior and the light installation in the main lounge. The piece consists of thousand transparent crystal glass wands levitating in a 26-meter strip. Their lightness and random arrangement make it seem as if they are floating above the lobby.



Jetex FBO VIP Terminal
Dubai, UAE



KPM Healthcare Centre

**KMP personifies an
oasis of health known
for offering premium
and comprehensive
care to its clients.**

Hong Kong

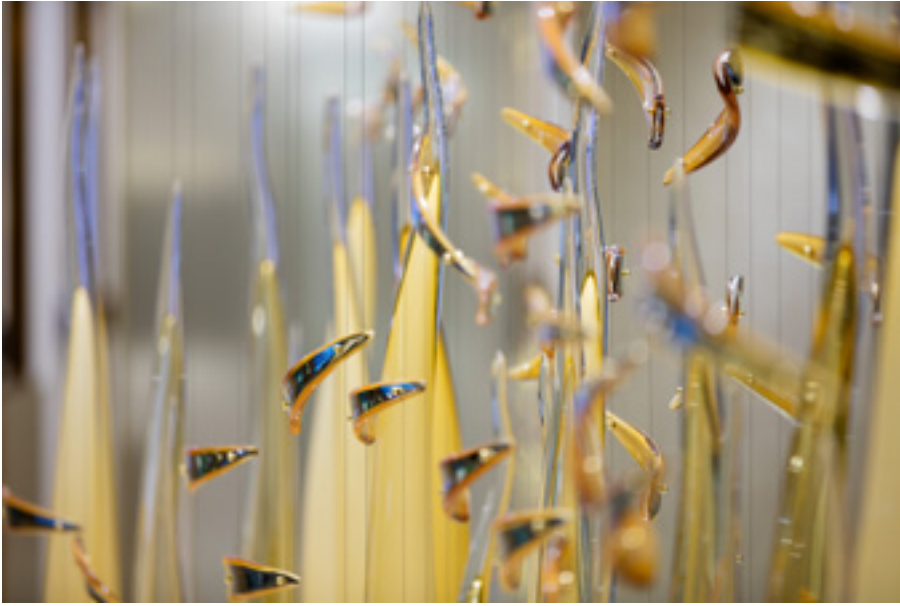






KPM Healthcare Centre
Hong Kong

The waiting room's centrepiece is a glass coral reef featuring an anemone surrounded by a school of fish. Each fish is handblown, with amber and crystal layers applied to opal glass on one side and with metal nanocoating on the other. We used four decoration techniques, including silvering and amber colouring, to achieve the most natural look.



KPM Healthcare Centre
Hong Kong





Al Rufaa Celebration Hall Complex

A perfect union between the ethereal beauty of clear, bright crystal and airy lightness of the interior makes this wedding venue, located on the aptly named celebration street, perfect for exchanging everlasting vows.

Doha, Qatar







Our bespoke handblown crystal and cut glass lighting installations create an unparalleled ambience across the five ceremonial halls, six vestibules, the social room, and corridors. The promise to create a perfect backdrop for a fairytale wedding fit for a king and his queen is fulfilled.

Al Rufaa Celebration Hall Complex
Doha, Qatar



Al Rufaa Celebration Hall Complex
Doha, Qatar





Al Ruffaa Celebration Hall Complex
Doha, Qatar



Oval Building

Although Sans Souci is known for designing lighting for residential and hospitality, we were thrilled to be a part of this great corporate project.







Oval Building
Agios Athanasios, Cyprus

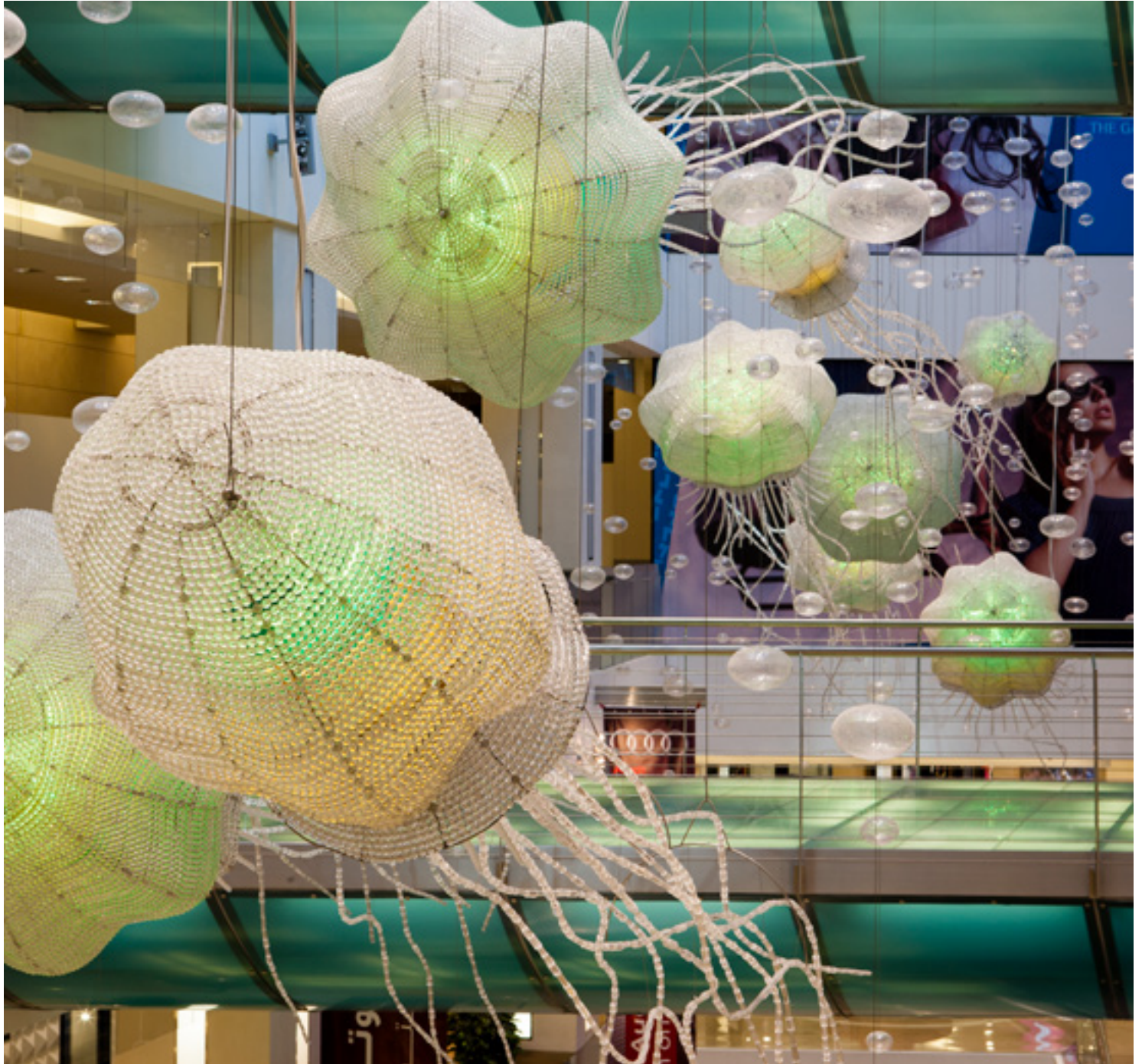
Our associate at Finesse Art & Design Bureau, Sicilia Shine, is an established interior designer from Russia and based in Limassol, Cyprus. When she reached out to us, we were pleased to accept the challenge with the offer to participate in one of her ambitious projects. Inspired by some of our exhibition pieces, Sicilia requested a central chandelier to brighten her unique project's interior.

Gate Mall

A lesson in marine biology could be the name for our bespoke medusa installation inside the Gate Mall in Dubai. Nine giant glass jellyfish floating above the main shopping promenade express the spirit of underwater exploration.







Gate Mall
Doha, Qatar

This impressive dynamic lighting sculpture weighs over 2 tons and covers an area of 232 square meters. The installation's changing colours are achieved by using programmed RGB LED strips, creating a distinctive atmosphere. The journey to the heart of the ocean is complete.







Gate Mall
Doha, Qatar



Office Building

A tailor-made chandelier is the the main focal point of this luxury office building reception, creating working environment that both inspires and boosts productivity.





Office Building
Russia



The lighting sculpture is comprised of 370 handblown Bohemian crystal leaves with a detailed optical pattern, creating a dramatic 7-metre long and 5-metre wide installation. The colours for this contemporary interior were selected to achieve the perfect ambience. Cognac hues together with crystal create a timeless colour combination which welcomes employees and visitors during day and into the evening.

BESPOKE

YACHTS

Fernando Pessoa wrote in his famous poem “God placed danger and the abyss in the sea, but he also made it heaven’s mirror.” Yachts demand one-of-a-kind pieces using bespoke designs and smart lighting solutions. We are experts in delivering designs for the most beautiful and complicated spaces such as yachts and cruise ships.

Diamonds Are Forever

**Sailing on a tidal
wave of breathtaking
luxury, the interior
of this superyacht
promises an incredible
experience on your
journey.**

Superyacht





Diamonds Are Forever
Superyacht



The infusion of gold and white creates a perfect backdrop for the sparkling crystal chandeliers magnifying the opulent richness and elegance in contrast to the simple blue line of the horizon. Diamonds, indeed, Are Forever.

Lady Linda

**Sailing is a genuinely
luxurious experience.
The elegant and
comfortable interior
of the Lady Linda yacht
is no exception.**







Lady Linda
Yacht

A warm and inviting atmosphere aided by the Art Deco lighting installations reflect superbly in the cut-glass mirror walls and golden hues in each room onboard. Bon voyage is guaranteed here.





Fruitful Voyage

Life on a superyacht is the height of luxury. Passengers can experience an eternal summer, riding the waves to desert islands and crystal clear seas where the sunlight glistens on the water. Yacht interior design is a discipline in its own right. Interiors must be functional for the logistical needs of a boat while also providing the ultimate comfort and quality for passengers.











Fruitful Voyage
Yacht

The chandelier is inspired by a delicious highlight of European summer - strawberry picking season. Each component represents a ripe strawberry, together creating an abundant bed of sweet fruit. Perfect to be enjoyed on the yacht, complemented with a glass of champagne.

Specially designed for a yacht interior, the chandelier is made of durable materials with stable fixings and shaped to suit lower ceilings. A main metal rod, coated in gold, is then fitted with smaller studded rods which hold the stunning glass components. Each glass component is crafted from crystal with an integrated light source. The inside is sandblasted and the outside finished with soda effect to create a warm ambience to complement the luxury interior. The size and shape of the piece fits perfectly above a large mahogany dining table.

Selection of References

Burj Al Arab	Dubai	UAE
The Plaza Hotel	Doha	Qatar
Park Hyatt Hotel	San Diego	USA
Hyatt Regency Hotel	Dehradun	India
Claridge's Hotel	London	UK
Hotel Kempinsky	Guangzhou	China
Grand Resort Bad Ragaz	Bad Ragaz	Switzerland
The Ritz-Carlton Berlin	Berlin	Germany
Wynn Hotel	Macau	China
The Address Hotel	Dubai	UAE
Lowry Hotel	Manchester	UK
Widenmoos	Reitnau	Switzerland
Jeju Shinhwa World Marriott Resort	Seogwipo-si	South Korea
W Hotel - The Palm	Dubai	UAE
7132 Vals Hotel	Vals	Switzerland
W Suzhou Hotel	Suzhou	China
The Ritz-Carlton Pune	Pune	India
JW Marriott Hotel Kolkata	Kolkata	India
Columbus Hotel Monte Carlo	Monte Carlo	Monaco
Conrad Hotel	Shenyang	China
Salwa Beach Resort	Doha	Qatar
Four Seasons Kuala Lumpur	Kuala Lumpur	Malaysia
AlRayaan Hilton Hotel Doha	Doha	Qatar
Intourist Hotel	Baku	Azerbaijan
Curio Hotel Doha	Doha	Qatar
White City Hotel	Baku	Azerbaijan
Double Tree Hotel by Hilton	Doha	Qatar
Sheraton Doha Resort & Convention Hotel	Doha	Qatar
Four Seasons Dubai at Jumeirah Beach	Dubai	UAE

Hotels

Banana Island Resort Doha by Anantara	Doha	Qatar
Prince de Galles Hotel	Paris	France
Lancaster Hotel	London	UK
Abrait Al-Bait	Mecca	Saudi Arabia
Swissotel Makkah	Mecca	Saudi Arabia
Hajj Terminal Hotel	Jeddah	Saudi Arabia
Raffles Makkah Palace	Mecca	Saudi Arabia
The Connaught	London	UK
The St. Regis Osaka	Osaka	Japan
Hotel Cap Estel – Eze Bord de Mer	Éze	France
Hilton Old Town	Prague	Czech Republic
The Langham London	London	UK
Renaissance Hotel	Prague	Czech Republic
Four Points by Sheraton Shanghai	Shanghai	China
Conrad Hong Kong	Hong Kong	Hong Kong
Hilton Prague Hotel	Prague	Czech Republic
Maxmilian Hotel	Prague	Czech Republic
Nassima Royal Hotel	Dubai	UAE
Rosewood Abu Dhabi	Abu Dhabi	Saudi Arabia
Hotel de Paris	Monte Carlo	Monaco
1 Blackfriars Tower	London	UK
Al Wakra Hotel	Doha	Qatar
Fairmont Ajman (spa)	Dubai	UAE
Four Seasons Hotel Doha	Doha	Qatar
Spa Resort	Doha	Qatar
Fairmont Hotel Vier Jahreszeiten	Hamburg	Germany
Palace Onego Hotel	Petrozavodsk	Russia
Boulevard Hotel	Baku	Azerbaijan
Park Hyatt San Diego	San Diego	USA

Selection of References

Rajapushpa Villa	Hyderabad	India
Hollywood Hills Residence	Los Angeles	USA
Mr. Jhabakh Residence	Hyderabad	India
ABN Residence	Hyderabad	India
Private Residence /mold-melted window pane accents/	Moscow	Russia
Private residence /deep engraved glass doors/ Linden	Moscow	Russia
Private Residence /crystal chandeliers/	Amman	Jordan
Private Residence /contemporary lighting & wall artwork/	Doha	Qatar
Private Residence /contemporary lighting/	Moscow	Russia
Private Residence	Beirut	Lebanon
Private Residence	Abu Dhabi	UAE
Faisal Al Mana Villa	Doha	Qatar
Beach Villa	Doha	Qatar
Private Residences in Skolkovo I and II	Moscow	Russia
Al Mulah Private Villa	Dubai	UAE
New Rayyan Palace	Doha	Qatar
Private Residence	Malaga	Spain
Al Fattan Villa /classical chandeliers/	Dubai	UAE
Presidential Palace Abu Dhabi /glass artworks/	Abu Dhabi	UAE
Private Palace /classical chandeliers/	Doha	Qatar
Private Residence /contemporary lighting/	London	UK
Private Residence /contemporary & classical lighting/	Moscow	Russia
Al Wakra Gym & Spa /contemporary lighting/	Doha	Qatar
Private Residence /contemporary lighting/	Dubai	UAE
Private Residence /contemporary & classical lighting/	Jakarta	Indonesia
Private Residence	Dubai	UAE
Private Vila	Foshan (Shanghai)	China
Pool Villa /contemporary lighting sculpture/	Dubai	UAE

Private residences

Private Residence /contemporary lighting/	Moscow	Russia
Private Residence /contemporary lighting & wall artwork/	Doha	Qatar
Private Residence /classical lighting/	Moscow	Russia
Private Residence /contemporary lighting/	Vladivostok	Russia
Privata Palace /contemporary lighting/	Paris	France
Private Residence /skylight/	London	UK
Private Residence /glass panels for a cabinet/	Los Angles	USA
Private Residence /glass columns/	Delhi	India
Private Residence /Ham villa/	Dubai	UAE
Privata Palace /contemporary lighting/	Dubai	UAE
Private Villa – Emirates Hills /lighting & lighting sculpture/	Dubai	UAE
Private Residence /sandblasted glass panels/	Jeddah	Saudi Arabia
VIP Villa – St. Regis Resort Abu Dhabi /lighting/	Abu Dhabi	UAE
Private Residence /lighting & glass in architecture/	Moscow	Russia
Dafna Palace /custom made light fixtures/	Doha	Qatar
Private Residence /decorative tiling/	Paris	France
VIP Villa /classical lighting/	Baku	Azerbaijan
Wajba Palace /classical lighting/	Doha	Qatar
Private Residence /contemporary lighting/	Paris	France
Private Palace /contemporary lighting, glass in architecture/	Dukhan	Qatar
Private Residence /contemporary lighting/	Casablanca	Morocco
Private Palace /contemporary lighting, glass in architecture/	Dukhan	Qatar
Private Residence /contemporary lighting/	Casablanca	Morocco
Private Palace /contemporary lighting, glass in architecture/	Dukhan	Qatar
Private Palace /contemporary lighting, glass in architecture/	Riyadh	Saudi Arabia
Private Residence /contemporary lighting/	Paris	France
Private Residence /classical lighting/	Moscow	Russia
Private Residence /oriental lighting & glass doors/	Moscow	Russia

Private Residences

Private Residence /glass mosaic swimming pool/	Nice	France
Private Residence	Antibes	France
Al Rawda Villa	Medina	Saudi Arabia
Private Residence Slava /lighting/	Moscow	Russia
Al Basateen Private Residence /contemporary lighting/	Jeddah	Saudi Arabia
One Hyde Park – private residence	London	UK
Private Residence /contemporary lighting/	Jeddah	Saudi Arabia
Private Residence	Doha	Qatar
Private Residence	Beirut	Lebanon
Private Residence	Moscow	Russia
Private Residence /lighting/		Switzerland
Private Residence /glass mosaic sauna/	Saint-Tropez	France
Private Residence /tiling/	Prague	Czech Republic
Residential Building /contemporary classics/	Shanghai	China
Trident Bayside /classical lighting/	Dubai	UAE
Homantin Residence	Honk Kong	Honk Kong

Restaurants

The Connaught Patisserie	London	UK
Atelier M Restaurant, Pier 7	Dubai	UAE
Shinok Restaurant	Moscow	Russia
Crown Perth – Bistro Guillaume	Perth	Australia
Manon Restaurant	Moscow	Russia
Manon Restaurant	New York	USA
Crown Perth – Modo Mio, Cucina Italiana	Perth	Australia
Casta Diva Restaurant	Moscow	Russia
Bochka Restaurant	Moscow	Russia
Orange Restaurant	Moscow	Russia
Paru Restaurant	Dubai	UAE
Pavilion Prud Patriki Restaurant	Moscow	Russia

Yachts

Private Yacht /laminated panels/	Amsterdam	Netherlands
Private Superyacht /classical lighting/	Genova	Italy
Private Yacht /contemporary lighting/	Genova	Italy
Swift Superyacht	Abu Dhabi	UAE
Hemigway's Bar & Casino at Thomson Celebration Cruise Ship		
Lady Michelle		
RLD 5477 Yacht	Hamburg	Germany
My Rocky		Germany
Lady Linda Yacht		
Diamonds are Forever	Livorno	Italy
Crystal Serenity		
Anastasia Superyacht		
Private Yacht /contemporary lighting/		Germany
Private Yacht /lighting & glass in arcitecture/	Genova	Italy
Victoria M Superyacht		

Selection of References

XXII Carat	Dubai	UAE
BVLGARI Residential	Dubai	UAE
BVLGARI Mansions	Dubai	UAE
Petronas Towers	Kuala Lumpur	Malaysia
Southbank Place Spa	London	UK
One Manhattan Square	New York City	USA
Waterfront Market	Dubai	UAE
The Exchange 106	Kuala Lumpur	Malaysia
KPM Healthcare Centre	Hong Kong	Hong Kong
JETEX FBO VIP Terminal	Dubai	UAE
Al Rufaa Celebration Hall Complex	Doha	Qatar
Dubai International Financial Centre – Central Park Towers	Dubai	UAE
Sheremetyevo International Airport	Moscow	Russia
Oval Building	Agios Athanasios	Cyprus
Office Building	Jeddah	Saudi Arabia
Showroom in Marseille	Marseille	France
International Petroleum Investment Company - Headoffice	Abu Dhabi	UAE
Crown Casino	Melbourne	Australia
Ideal Marbre Showroom	Nice	France
Boutique for men	Kazan	Russia
Princess Nora Bint Abdulrahman University	Riyadh	Saudi Arabia
Gate Mall – shopping mall	Doha	Qatar
Fifty One East – shopping mall	Doha	Qatar
Glass artworks for Ministry of Interior Design	Riyadh	Saudi Arabia
War of Independence Victory Column	Tallinn	Estonia
David Morris - Dubai Mall	Dubai	UAE
Russian Drama Theatre	Astana	Kazakhstan
Orenburg Drama Theatre	Orenburg	Russia

Public spaces

Fortnum & Mason – the Parlour & the Fountain Restaurant	London	UK
King's Casino	Rozvadov	Czech Republic
JRE Showroom	Doha	Qatar
Office Building	St. Petersburg	Russia
Google Campus	Hyderabad	India
Platina Office Building	Mumbai	India
Marina Bay Sands	Singapore	Singapore
Qatar Airport VIP lounge	Doha	Qatar
Curio Mall of Qatar	Doha	Qatar
Korloff Boutique	Kuwait	Kuwait
Designers Empire /boutique/	Dubai	UAE
Office Building	Moscow	Russia
Ashish N Soni Fashion Boutique	Delhi	India
Gazprom Bank (3 branch offices)	Moscow	Russia
Indiabulls		India
Bloomingdale's at the Aventura Mall	Miami	USA
Office Building		Russia

Meet Our Team

London

+44 77 84 79 60 51
london@sanssoutilighting.com

New York

+1 267 666 3222
newyork@sanssoutilighting.com

Los Angeles

+1 424 466 4166
la@sanssoutilighting.com

Miami

+1 786 867 7687
miami@sanssoutilighting.com

Shanghai

+86 131 51 18 59 30
shanghai@sanssoutilighting.com

Singapore

+65 9790 7874
singapore@sanssoutilighting.com

Hong Kong

+65 8458 5759
hongkong@sanssoutilighting.com

New Delhi

+91 98 18 99 59 20
newdelhi@sanssoutilighting.com



sanssoutilighting



sans-souci-s-r-o-



@SansSouciLights

In today's challenging environment, we remain a truly global company and have representatives in all regions and many markets worldwide.

Moscow

+420 777 772 985
moscow@sanssoutilighting.com

France

+420 770 181 020
france@sanssoutilighting.com

Canada

+1 839 500 3593
canada@sanssoutilighting.com

Mexico

+1 839 500 3593
mexico@sanssoutilighting.com

Authorized Partners

+1 839 500 3593
authorizedpartners@sanssoutilighting.com

Dubai

+971 506 662 854
dubai@sanssoutilighting.com

Prague / Europe

Headquarters & Flagship Showroom
+420 770 155 774
prague@sanssoutilighting.com

Production facility Cvikov

Cvikov, Czech Republic
+420 724 275 901
production@sanssoutilighting.com



sanssoutilighting



sans-souci-s-r-o-

#sanssoutilighting

**Together we will
create captivating
pieces that last
a lifetime.**